

# One Stop Centre Scheme

## 1. Introduction

Gender Based Violence (GBV) is a global health, human rights and development issue that transcends geography, class, culture, age, race and religion to affect every community and country in every corner of the world. The Article 1 of UN Declaration on the Elimination of Violence 1993 provides a definition of gender-based abuse, calling it "any act of gender-based violence that results in, or is likely to result in, physical, sexual or psychological harm or suffering to women, including threats of such acts, coercion or arbitrary deprivation of liberty, whether occurring in public or in private life".

1.2 In India, gender based violence has many manifestations; from the more universally prevalent forms of domestic and sexual violence including rape, to harmful practices such as, dowry, honour killings, acid attacks, witch-hunting, sexual harassment, child sexual abuse, trafficking for commercial sexual exploitation, child marriage, sex selective abortion, *Sati*, etc. Other than these, India is also grappling with violence due to inequities in social life, displacement and communal incidents.

## 2. Background

2.1 Ministry of Finance, Government of India has established 'Nirbhaya Fund' with an initial corpus of Rs.1000.00 cr. (as per the announcement in Budget 2013-14) for women safety pertaining to the strategic areas of prevention, protection and rehabilitation. For subsequent financial years of 2014-15 and 2015-16 an amount of Rs.1000.00 cr. (each financial year) has been provided under the Nirbhaya Fund.

2.2 The 12<sup>th</sup> Plan Working Group on Women's Agency and Empowerment had recommended setting up of One Stop Crisis Centres, on pilot basis, for providing shelter, police desk, legal, medical and counselling services to victims of violence under one roof integrated with a 24 hour Helpline.

2.3 Justice (Retd.) Usha Mehra Commission, set up to suggest measures to improve women's safety had recommended in its report submitted on 22.02.2013, that there is need for establishment of a "one-stop centre" at a notified hospital to help victims of sexual assault and ensure speedy punishment to culprits.

2.4 The Scheme of One Stop Centre was approved for implementation from 1<sup>st</sup> April, 2015. The scheme aims to facilitate access to an integrated range of services including medical aid, police assistance, legal aid/case management, psychosocial counselling, and temporary support services to women affected by violence. Under the scheme, it has been envisaged that One Stop Centres would be set up across the country in phased manner. In the first phase, one Centre was sanctioned per State/UT. Further, 150 additional Centres were taken up in second phase during 2016-17. Thus a total of 186 OSCs have been sanctioned so far and 166 of the same are operational as on 12.12.2017.

2.5 It has been envisaged that 50 additional One Stop Centres each will be setup during the years 2017-18, 2018-19 and 2019-2020 respectively.

2.6 Assessment of the performance of the functioning of the OSCs was carried out by the [National Institute of Public Cooperation and Child Development](#) (NIPCCD). In the assessment report, it has been emerged that the services of OSC are very useful and this will be the focal point for the women affected by violence to avail integrated services and recommended for further expansion of One Stop Centre in all districts.

2.7 The norms for recurring and non recurring grants have been revised keeping in view the outcome of the assessment as well as the inputs received from the States/UTs Government during implementation of the schemes. The mode of construction of the OSC has also been changed from prefabricated to normal construction, as the prefabricated Centre has shown some disadvantages. **This scheme is implemented with 100% Central assistance.**

### **3. Criteria for selection of additional location**

3.1 The distribution of the additional 150 OSCs amongst the States is proposed on the basis of (i) number of registered crime, (ii) number of female population, and (iii) Child Sex Ratio in the States. The weightage of 40% was assigned to crime registered, 30% to female population as per 2011 census and 30 % to Child Sex Ratio. The State-wise details of 150 proposed OSCs are at [Annexure-I](#).

3.2 In view of the above, it is proposed that during 2017-18, 2018-19 and 2019-20, State Governments are required to submit their proposals within one month from the date by which the proposal will be sought. The Ministry will approve the proposals received from the State Governments after duly assessing/vetting the need. The States have to set up/start the centre within three months after release of funds by this Ministry.

### **4. Location Preference for Setting up of OSC :**

4.1 For establishing a Centre, the first preference would be to consider proposals where suitable and adequate accommodation with separate access having at least 5 rooms and carpet area of 132 sq.m. within a hospital / medical facility, that is prominently visible and easily accessible to the women affected by violence is available. For this purpose the staff quarter within or outside the premises of the hospital may also be used.

4.2 If it is not possible to locate accommodation within a hospital or medical facility, then an existing Government/Semi Government institutions/**Women Institutions/Swadhar Grehs/Working Women Hostels** located within 2 km radius of the hospital/medical facility in the district headquarter having adequate accommodation with separate access **may be preferred for operating the Centre.**

4.3 If it is not feasible, to locate the Centre in the existing accommodation, the Centre may be constructed on adequate land either within hospital/medical facility or within 2 km radius of the hospital/medical facility. The requirement for construction of building of Centres will be assessed, after taking into account of non availability of existing accommodation. The Centres **may be** constructed on suitable land having at least an area of 300 sq.m. as identified by **the concerned** State Government.

4.4 Only when Government buildings are not available or land is not made available by the State Government, permanent OSC may be constructed. The OSC, Mahila Shakti Kendra (MSK), Women Helpline, etc., are to be co-located as far as possible to enable coordination, convergence and cost efficiency.

4.5 The States that opt for OSC construction are required to make the OSC operational in Temporary Locations within three months from the date of release of the funds for the OSC in the respective District.

## 5. Services

5.1 The One Stop Centre will provide support and assistance to women affected by violence, both in private and public spaces. In case girls under 18 years of age are referred to the Centre, they will also be served in coordination with authorities/institutions established under the Juvenile Justice (Care and Protection of Children) Act, 2000 and Protection of Children from Sexual Offence Act, 2012. The Centres will be integrated with a Women Helpline to provide a range of services which are outlined in the table below :

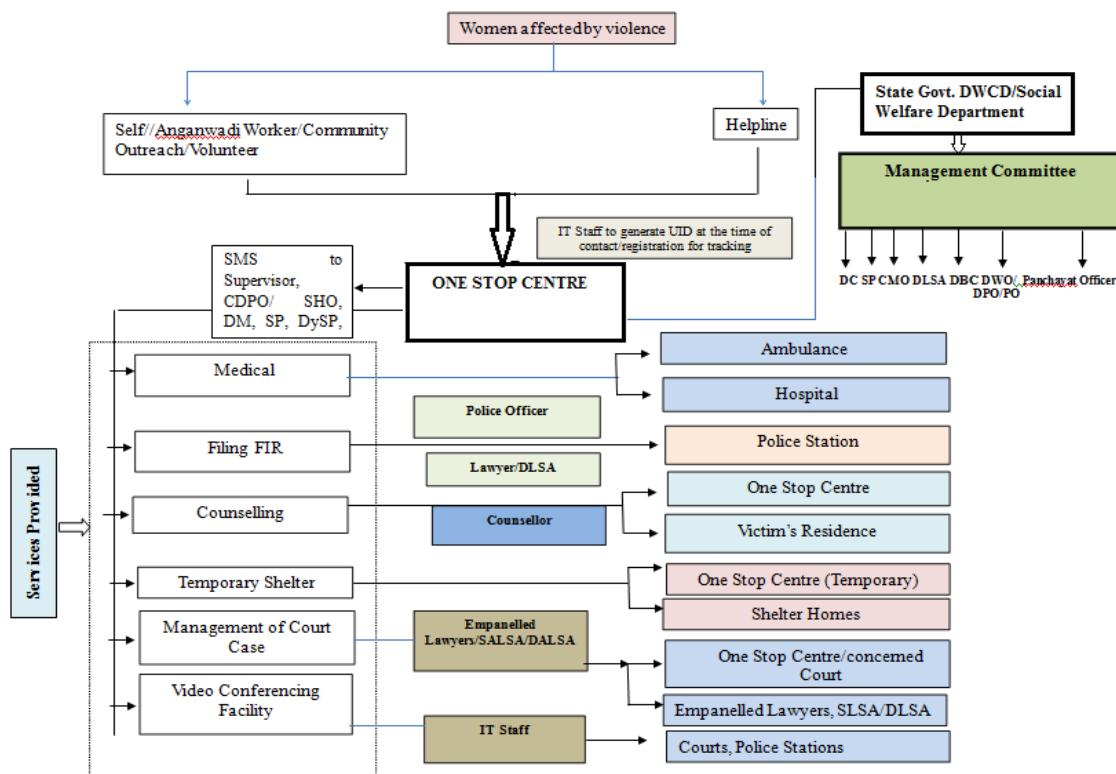
Sl. No.	Type of Service	Service Provider	Implementation Modalities
1	<b>Medical assistance<sup>1</sup>:</b> <ul style="list-style-type: none"> <li>Referral to hospital through helpline/Centre</li> <li>If required, provide ambulance</li> </ul>	<ul style="list-style-type: none"> <li>Centre Administrator through empanelled hospital/medical practitioner/paramedical staff</li> <li>Public and private ambulance providers</li> </ul>	<ul style="list-style-type: none"> <li>For cases referred to OSC, OSC staff to ensure that: <ul style="list-style-type: none"> <li>The Hospitals follow the New Medico-Legal Guidelines, 2014 for survivors and victims of sexual violence developed by Ministry of Health and Family Welfare recording the case in the Medico-Legal Case (MLC) examination proforma of 13 pages.</li> <li>A copy of the duly filled MLC form to be given to the aggrieved woman being examined for her record</li> </ul> </li> </ul>
2	<b>Police assistance:</b> Facilitate/Assisting in filing First Information Report (FIR/NCR)	<ul style="list-style-type: none"> <li>A Police Officer to facilitate the process.</li> </ul>	<ul style="list-style-type: none"> <li>To ensure that the statement of the survivor and victim of sexual violence/assault being preferably recorded by a female police officer wherever possible/available</li> <li>To ensure that the survivors and victims of sexual violence/assault to have provided a sanitary kit and additional clothing as evidence during medical examination</li> </ul>
3	<b>Psycho-social support/ counselling</b>	<ul style="list-style-type: none"> <li>Empanelled counsellors on pro-</li> </ul>	<ul style="list-style-type: none"> <li>The counsellors to ensure that full confidentiality should be</li> </ul>

<sup>1</sup>As per Criminal Law (Amendment) Act, 2013, all hospitals, public or private, shall have to immediately, provide the first-aid or medical treatment, free of cost, to victims of acid attack or sexual violence.

Sl. No.	Type of Service	Service Provider	Implementation Modalities
		bono basis or for honorarium	maintained regarding the details of the cases being registered of the aggrieved woman. The details should not be shared with the media, other members/ those conducting social audits etc.
4	<b>Legal aid/counselling</b>	<ul style="list-style-type: none"> <li>Lawyers empanelled with District Legal Services Authority (DLSA/SLSA) or empanelled on pro-bono basis or for honorarium</li> </ul>	<ul style="list-style-type: none"> <li>The empanelled lawyers should have undertaken OSC trainings as conducted periodically.</li> </ul>
5	<b>Shelter:</b> Short stay with food and clothing Referral to shelter homes for prolonged stay	<ul style="list-style-type: none"> <li>One Stop Centre for short stay</li> <li>Swadhar Homes/ other Shelter Homes for long stay</li> </ul>	<ul style="list-style-type: none"> <li>A sanitary kit should be made available in the OSC and provided to woman seeking temporary shelter at OSC</li> </ul>
6	<b>Video Conferencing Facility</b>	<ul style="list-style-type: none"> <li>To facilitate police and court proceedings</li> </ul>	<ul style="list-style-type: none"> <li>OSCs should ensure setting up of this facility</li> </ul>

5.2 The Centre will be open 24 hours with referral services. To provide referral services, lists of hospital, police stations, lawyers, counsellors will be available at the Centre.

5.3 The flow chart indicating the services to be rendered through the Centre along with the service providers is given below:



## 6. Roles and responsibilities of key stakeholders

6.1 The roles and responsibilities of the concerned Ministries/Departments are outlined in the table below:

Sl. No.	Ministry	Primary Role	Other Support
1.	Ministry of Health & Family Welfare/ State/ District	<ul style="list-style-type: none"> <li>• Protocols for doctors issued by the Ministry to be made available in local dialect</li> <li>• To be given in a “calendar form” to OSC</li> <li>• Directories of Doctors/Hospitals/ Clinics Blood Banks (public &amp; private) operational within the State/UT</li> <li>• Directories with complete address, phone number of in-charge/nodal Doctor and hospital</li> <li>• Directories of Ambulances (public and private)</li> </ul>	<ul style="list-style-type: none"> <li>• The Hospitals follow the New Medico-Legal Guidelines, 2014 for survivors and victims of sexual violence developed by Ministry of Health and Family Welfare recording the case in the Medico-Legal Case (MLC) examination performa of 13 pages.</li> <li>• A copy of the duly filled MLC form to be given to the aggrieved woman being examined for her record</li> <li>• Ensure enforcement of Protocols.</li> <li>• Training and sensitization of health personnel including para-medical staff</li> <li>• Ensure proper collection of evidence in cases of sexual assault.</li> <li>• Support process of identifying para- medical staff.</li> <li>• MOUs with each identified institutional resource</li> </ul>
2.	Ministry of Home Affairs/ State/ District	<ul style="list-style-type: none"> <li>• Designate police officer for OSC to facilitate prompt and proper filing of FIR</li> <li>• Facilitation in proper collection of evidence</li> </ul>	<ul style="list-style-type: none"> <li>• Sensitize police personnel dealing with violence against women cases</li> </ul>
3.	Ministry of Law & Justice/ NLSA/ SLSA/ DLSA	<ul style="list-style-type: none"> <li>• List of dedicated and sensitive lawyers ready to give legal aid to the women affected by violence and liaison with OSC</li> <li>• List of district wise para legal volunteers</li> </ul>	<ul style="list-style-type: none"> <li>• Support in ensuring expeditious disposal of cases.</li> <li>• Facilitating compensation to the survivors of violence</li> </ul>

## **7. Human Resource Requirements**

For smooth functioning of the One Stop Centre, the State Government may outsource activities required for functioning of Centre such as centre administrator, case worker, dispatch rider, legal assistance, medical assistance, counseling, IT, MIS operator, multipurpose and security etc. The service of case worker, medical assistance, multipurpose helper, IT staff and security should be outsourced on shift basis to provide the service round the clock.

## **8. Construction of the Centres**

8.1 The requirement for construction of building of Centres will be assessed, after taking into account of non availability of existing accommodation. The Centres could be constructed on the adequate and suitable land having at least total area of 300 sq.m. identified by State Government, if required.

8.2 The physical requirement of One Stop Centre in terms of total area is 300 sq m and carpet area 132 sq.m .

8.3 The State DWCD/ Social welfare departments in coordination with the District Collectors/Magistrates should ensure to forward the land details for OSC construction and relevant documents such as Survey Number/Plot/Khasra Number, OSC Site/Plot demarcation diagram with a covering letter to the Ministry while submitting the documents to the Ministry for availing the grants for OSC.

### **Ground Floor**

- One room for Office of Administrator
- One room for office/video Conferencing.
- One room for counsellor/Medical Consultant
- one room to accommodate a ward with 5 beds where the women affected with violence can be admitted,
- Lobby, two Toilets, One Pantry Room, Stairs etc.

### **First Floor**

- Two Room accommodation for Administrator on First Floor
- One Pantry Room, One Toilet, Stairs etc.

## **9. Administrations and Management of the Centres**

9.1 The overall implementation of the One Stop Centre Scheme would be by the State/UT Department of Women and Child Development/Social Welfare Department. This essentially includes the setting up of One Stop Centre in the respective districts. The State/UT DWCD/Social Welfare Department would accordingly ensure the constitution of the Task Force which would be chaired by the District Collector /District Magistrate of the concerned district. The Task Force would be headed by the District Collector/Deputy Commissioner of the respective District who would apprise the State DWCD/Social Welfare Department about the OSC operations in the respective districts. The Task Force would comprise of the following members:

- District Magistrate/Commissioner (Chairperson of the Committee)
- Superintendent of Police
- Secretary, District Legal Service Authority (DLSA)
- Chairperson of the Bar Council
- Chief Medical Officer
- District Programme Officer (DPO)/Protection Officer
- District Panchayat Officer
- Members of the Civil Society (3 members out of which at least 2 be women) preferably who have valid/ relevant experience in dealing with issues related to gender issues, women survivors of violence, sexual assault and violence against women.
- Project officer ITDA/ITDP in district with ITDA/ITDP area
- Any other member co-opted by the Chairperson

9.2 The functions of the Task Force will be as follows:

### **9.2.1 Location of OSC:**

- The District Collector /District Magistrate of the concerned district will identify the location or land for setting up the One Stop Centre. In cases where such establishments are not available, the State/UT Government may explore the option of an alternative operating structure. Day to day coordination will be done by the District Programme Officer/Protection Officer appointed under Protection of Women from Domestic Violence Act, 2005.
- Make suitable, viable administrative arrangements for running the Centre that includes allotting space for OSCs to be made operational in temporary buildings till OSC construction is complete by ensuring installation of a telephone line, internet facility, Solar panels, CCTV, video conferencing facility, integration of OSC with Women Helpline etc.

### 9.2.3 **Human Resource at OSC:**

- Undertake OSC staff recruitment in a fair and transparent manner or alternatively decide outsourcing of activities required for functioning of Centre by an Implementing Agency preferably that has valid/ relevant experience in dealing with issues related to gender issues, women survivors of violence, sexual assault and violence against women to entrust day-to-day operations.
- Appoint/Recruit/Select empanelled agencies/individuals to provide legal counselling /Medical aid / psycho-social counselling
- Ensure periodic training of OSC staff including that of new members, officials/stakeholders concerned with OSC operations such as DWCD official, DPOs etc.

### 9.2.4 **Coordination:**

- Coordinate the actions of different stakeholders, agencies and Government Departments providing services to the Centre; this includes involving experts to solve the Technical issues of integration of One Stop Centre and Women Helpline.

### 9.2.5 **Review:**

- Appraise the performance of the One Stop Centre to the State DWCD/Social Welfare department from time to time
- Receive the financial accounts provided by the Implementing Agency
- Monitor the functioning of the Centre regularly and to provide guidance, support and advice to the Centre Administrator for effective functioning of the One Stop Centre
- Review the physical and financial progress of the Centre regularly.

### 9.2.6 **Reporting/OSC Data Management:**

- Report on the functioning of the Centre to the State Government on a quarterly basis on the financial, administrative and operational aspects of the Centre .
- To ensure a mechanism to provide monthly/ quarterly information to the State DWCD/Social Welfare Department regarding the number of cases registered at OSCs including those referred by Women Helpline.
- To ensure the confidentiality of cases of women accessing the OSC
- To ensure the back up of OSC cases/case management MIS in case of Data loss.

9.3 The District Collector/District Magistrate will also direct the concerned to ensure 24x7 operations of the activities required for functioning of OSC such as management, legal assistance, medical assistance, counselling, IT, related multipurpose activities and security etc.



## **10. Institutional arrangements for Operations of One Stop Centre**

**10.1 National level:** At the National level a Task Force may be set up with the Secretary, WCD as the Chairperson and concerned Joint Secretary, Financial Advisor and representatives of the relevant line Ministries as members. The Task Force would develop a mechanism for monitoring, coordinating and course correction of the OSCs working across the country. Secretary, WCD may cause minor changes in OSC guidelines for operational exigencies in needed cases without affecting basic aim, objective, substance of the scheme and without additional financial implications.

**10.2 State Level:** At the State level a Task Force may be set up with the Principal Secretary, DWCD/Social Welfare Department as the Chairperson with the representation of the relevant line departments to undertake a review of the working OSCs. The Task Force would be involved in monitoring, coordinating and course correction of the OSCs across the State.

**10.3 District Level:** At the district level the Task Force may be set up with District Collector/District Magistrate will also be responsible for oversight, monitoring, coordinating review and course correction of the OSCs working across the country.

## **11. Reporting**

11.1 The State/UTs DWCDs/ State Social Welfare Departments should ensure that the integration of the OSC and Women Helplines should be undertaken and data on women accessing the OSCs including that referred by Women Helplines should be made available to MWCD periodically.

## **12. Training & Capacity-building**

12.1 For implementation of the scheme, the National Institute of Public Cooperation and Child Development (NIPCCD) is organizing training programmes for Master Trainers at its Regional Centre who will further train other functionaries. Further, the National Institute of Public Cooperation and Child Development (NIPCCD) has developed a module for Master Trainers and functionaries associated with One Stop Centre to equip the master trainers with necessary skills to further train other functionaries by providing step-by-step guidance on assisting the women affected by violence.

12.2 The States/UTs may request NIPCCD to provide induction training to all the personnel involved in the functioning of OSC in the respective State/UTs. Towards fulfilling this objective, the State will coordinate with its various departments so that people providing services at OSC and those belonging to various departments can be sensitized and trained in handling the issues related to violence against women.

### **13. Awareness Generation**

13.1 The State Govt./UT/ State DWCD/ Social Welfare Departments may ensure the signage of OSC should be prominently placed at the OSC. The contents of the signage of the OSC essentially mentioning “Sakhi- One Stop Centre” should be written in English, Hindi and Local Language. The State Govt./UT/ State DWCD/ Social Welfare Departments may ensure development of gender sensitive IEC material towards the awareness generation about the OSCs.

### **14. Budgetary Provision**

14.1 The non-recurring grant for setting up One Stop Centre will be released to the District Collector/District Magistrate directly. Similarly, the recurring grant for running the One Stop Centre will be released to the District Collector/District Magistrate in bi-annual installments. The District Collector/District Magistrate will operate a separate bank account for scheme of One Stop Centre in District.

14.2 The estimated construction cost of the Centre based on CPWD 2012 rates is Rs. 48.69 lakh for Delhi and National Capital Region. Rates of other regions/locations would be as per the SOR of the Concerned States/UTs. Therefore a variable cost @ 5% of the construction cost has been kept to meet any variation in the construction cost. **The grant for construction of the building (capital expenditure) of the Centres shall be released to District Collector/District Magistrate in two installments based on the progress of the work.** The land will be provided by the State Governments. The details of the construction cost along with the specifications are at **Annexure-II**.

14.3 The total cost of scheme is Rs.338.32 crore for the year 2017-18, 2018-19 and 2019-20. The details of revised cost are at **Annexure-III**. The funding of the scheme will be from allocated fund for the Ministry under Nirbhaya Fund.

## **15. Funding Pattern**

15.1 This scheme will be implemented through States through the Nirbhaya Fund. The Central Government will provide 100% financial assistance. The funds would be made available by Ministry of Women and Child Development to the District Collector/District Magistrate directly.

15.2 A separate designated Bank Account would be opened to be operated by District Magistrate/District Collectors for implementing the OSC Scheme. The details of the Bank Account needs to be filled in the Bank Mandate form duly signed and stamped by the District Collector/District Magistrate and intimated to the MWCD at the earliest for transfer of funds through Public Financial Management System (PFMS). For this, PFMS registration should be undertaken immediately after opening of the OSC Bank Account by the District Magistrate/District Collector for OSC.

## **16. Fund Flow**

The MWCD will be responsible for budgetary control and administration of the scheme at the Central level. After getting the proposal from the States/UTs, the MWCD will transfer the funds to the concerned District Collectors directly. Funds shall released to the District Collector/District Magistrate bi-annually and second installment will be released after receiving the Statement of Expenditure (SoE) and Utilisation Certificate (UC) of the grant from the concerned District Collector/District Magistrate.

## **17. Evaluation**

Third party evaluation of OSC scheme will be done by 2019-2020 and bring up for re-appraisal by end of 2019-20.

## **18. Audit and Social Audit**

18.1 Audit will be done as per Comptroller & Auditor General of India norms and that channel will be followed at the Central and State Government levels.

18.2 Social Audit will also be undertaken which will be conducted by Civil Society Groups who have valid/ relevant experience in dealing with issues related to gender issues, women survivors of violence, sexual assault and violence against women.

\*\*\*\*\*

## Annexure-I

## State-wise details of proposed additional 150 OSCs

Sl. No	State/UTs	Crime during 2014	Child Sex Ration (CSR) 918	Female population	Crime	CSR	Female population	40% of crime+ 30% CSR+30% Female population
1	Uttar Pradesh	38467	902	786,32,552	17	7	22	15
2	West Bengal	38299	956	387,10,212	17	3	11	10
3	Rajasthan	31151	888	270,87,177	14	7	7	10
4	Madhya Pradesh	28678	918	289,04,371	13	5	8	9
5	Maharashtra	26693	894	464,78,031	12	7	13	11
6	Assam	19139	962	128,78,491	9	3	4	5
7	Andhra Pradesh	16512	918	376,82,594	7	5	10	8
8	Bihar	15383	935	397,54,714	7	4	11	7
9	Odisha	14606	941	181,44,090	6	4	5	5
10	Telangana	14136	914	421,38,631	6	6	12	8
11	Karnataka	13914	948	259,51,644	6	3	7	6
12	Kerala	11380	964	163,72,760	5	2	4	4
13	Gujarat	10837	890	242,85,440	5	7	7	6
14	Haryana	8974	834	97,80,611	4	11	3	6
15	Tamil Nadu	6325	943	310,04,770	3	4	8	5
16	Chhattisgarh	6255	969	103,59,585	3	2	3	3
17	Jharkhand	5972	948	130,60,792	3	3	4	3
18	Punjab	5425	846	113,73,954	2	10	3	5
19	Jammu & Kashmir	3321	862	47,82,774	1	9	1	4
20	Tripura	1615	957	15,56,978	1	3	0	1
21	Himachal Pradesh	1517	909	29,89,960	1	6	1	2
22	Uttarakhand	1395	890	41,63,425	1	7	1	3
23	Goa	488	942	6,60,420	0	4	0	1
24	Meghalaya	388	970	11,42,735	0	2	0	1
25	Arunachal Pradesh	351	972	5,18,027	0	2	0	1
26	Manipur	337	930	11,31,944	0	5	0	2
27	Mizoram	258	970	4,29,464	0	2	0	1
28	Sikkim	110	957	2,52,367	0	3	0	1
29	Nagaland	67	943	9,42,895	0	4	0	1
30	NCT of Delhi	15265	871	167,87,941	7	9	5	6
	<b>Total</b>	<b>337258</b>	<b>27743</b>	<b>547959349</b>	<b>150</b>	<b>150</b>	<b>150</b>	<b>150</b>

**Construction of One Stop Centre**

Plot Area – 300 Sq. m  
 Ground Coverage – 102.00 Sq.m  
 Total area – 132 Sq.m.

<b>Ground Floor</b>				
<b>Sl. No.</b>	<b>Purpose /Uses</b>	<b>Unit</b>	<b>Room Size (in ft.)</b>	<b>Area (Sq. ft.)</b>
1	Office /Video Conferencing		1100 Sq.ft	
2	Administrator			
3	Counsellor/Medical Consultant			
4	Toilet (1)			
5	Toilet (2)			
6	Short Shelter			
7	Others (Lobby, Stairs )			
<b>First Floor (Accommodation for Administrator)</b>				
1	Room (1)		300 sq.ft	
2	Room (2)			
3	Pantry			
4	Toilets			
<b>Preliminary Cost Estimate based on CPWD PAR-2012</b>				
<b>S.No.</b>	<b>DESCRIPTION</b>	<b>AREA (SQ.M.)</b>	<b>AMOUNT (In Rs.)</b>	
1	One Stop Centre Building	132.00	3578820.00	
2	Site Development	300.00	228000.00	
3	Solar Photo Voltaic Power Generation System	750 watt	93750.00	
4	<b>Total (sl.no.1+2+3)</b>		<b>3900570.00</b>	
5	Add cost Index @ 4% on PAR 2012 (for Delhi, NCR Region)		156022.80	
6	<b>Total</b>		<b>4056592.80</b>	
7	Add for Contingency @ 3%		121697.78	
8	Add for Agency charges @ 10%		405659.28	
9	Add Service Tax @14.5% on work contract i.e. 40% of total value		235282.38	
10	Add Service Tax on Agency Charges @ 14.5%		50139.49	
	<b>GRAND TOTAL( Sl.no. 6 to 10 )</b>		<b>4869371.73</b>	

Note : \* The above rates are applicable in Delhi NCR Region only, For Rates of other  
 \* Regions/locations, prevailing cost index of respective regions/ Locations shall be added on above rates.

Construction cost for One Stop Centre = **Rs.4869371.73**

Construction cost for the 60 One Stop Centre **Rs.4869371.73 X 25 = Rs.36,52,02,879**

## Annexure-III

## Details of revised cost of One Stop Centre Scheme

(Rs. in crore)

SI No.	Items/Components	No. of units	Per month/ Case	Annual	2017-18		2018-19		2019-20		Total
					No of centre		No of centre		No of centre	Cost	
<b>A</b>	<b>Central Level</b>										
1	Program Management Unit (PMU)										
a)	<b>NON RECURRING</b>										
	Establishment cost (Purchase of necessary office/ ICT etc. items etc. once every five years)			0.01		0.01					0.01
b)	<b>RECURRING</b>										
1	MIS Development and Certification, Training and IEC	Annual		2.586		2.586		2.596		2.596	7.788
	<b>Sub-Total A</b>			<b>2.596</b>	<b>0</b>	<b>2.596</b>	<b>0</b>	<b>2.596</b>	<b>0</b>	<b>2.596</b>	<b>7.788</b>
<b>B</b>	<b>State Level</b>										
a)	<b>Recurring</b>										
1	One Stop Centre Management @ 200000 pm			0.24	236	56.640	286	68.640	336	80.640	205.920
2	One Stop Centre Administrative Cost (Stationary (Cartridge, Paper etc.), Electricity Telephone/Fax, Catering/Food, Clothing & Medicine & Kit etc., Transportation)	monthly	0.0034	0.0408	236	9.6288	286	11.6688	336	13.7088	35.0062
3	Training, IEC, Advocacy	Annual		0.005	236	1.180	286	1.43	336	1.68	4.290
4	Contingency	5% of recurring budget		0.01429	236	3.372	286	4.087	336	4.801	12.261
	<b>Sub-Total (a-Rec)</b>			<b>0.300</b>		<b>70.821</b>		<b>85.826</b>		<b>100.830</b>	<b>257.477</b>
	<b>Non-recurring</b>										
1	Refurbishment of Existing facility			0.1	25	2.5	25	2.5	25	2.5	7.5
2	Administration cost (Refrigerator, Computer Peripherals, Telephone, Fax, Internet, Furnishing for the ward & other rooms, CCTV Camera & its installation etc.)			0.0241	50	1.205	50	1.205	50	1.205	3.615
3	Contingency			0.01	25	0.25	25	0.25	25	0.25	0.75
	<b>Sub-Total (b-Non Rec)</b>			<b>0.1341</b>		<b>3.955</b>		<b>3.955</b>		<b>3.955</b>	<b>11.865</b>
<b>C</b>	<b>Construction of the Centre</b>										
1	Construction Cost for One Stop Centre @ Rs.4869371.73			0.4869	25	12.173	25	12.173	25	12.173	36.520
2	Construction Cost for 50 One Stop Centre			0.4869	50	22.845					22.845
3	Variable Cost for the construction of OSC @5% of the construction Cost	5% of the construction Cost				0.609		0.609		0.609	1.826
	<b>Sub-Total C</b>					<b>35.627</b>		<b>12.782</b>		<b>12.782</b>	<b>61.191</b>
	<b>Total Cost (A+B+C)</b>					<b>112.999</b>		<b>105.159</b>		<b>120.163</b>	<b>338.321</b>