

CP-16/5/2020-Ujjawala

भारत सरकार

Government of India

महिला एवं बाल विकास मंत्रालय

Ministry of Women and Child Development

Ground Floor, Jeevan Tara Building,

Sansad Marg, New Delhi-110001

Dated 21.07.2020

**Subject: Minutes of Web Meeting on Inter-Ministerial Convergence for restructuring/integration of Swadhar Greh and Ujjawala Schemes with OSCs-regarding.**

The undersigned is directed to refer to the above subject and forward a copy of the minutes of the web meeting on Inter-Ministerial Convergence for restructuring / integration of Swadhar Greh and Ujjawala schemes with OSCs held on 23.06.2020 at 10:30 am under the Chairpersonship of Hon'ble Minister, Ministry of Women and Child Development, New Delhi for information and necessary action. The participating Ministries are further requested to give compliance on the minutes by 7th August, 2020.

Encl. As above.

  
(Manish Kumar Singh)

Under Secretary to the Government of India

To

1. PS to Minister, MWCD
2. PS to MOS, MWCD
3. PPS to Secretary, MWCD
4. Shri Praveen Kumar, Secretary, MSDE
5. Sh. Ashish Srivastava, Joint Secretary, MWCD
6. Ms. Aastha Saxena Khatwani, Joint Secretary, MWCD
7. Ms Santosh, Statistical Adviser, MWCD
8. Smt. Nita Kejriwal, Joint Sectary, MoRD
9. Smt. Punya Salila Srivastava, Joint Secretary, MHA
10. Smt. L.S. Changsan, Joint Secretary, MHRD
11. Shri. Suchindra Mishra, Joint Secretary, DFS
12. Shri A. K. Singh, Joint Secretary, MTA
13. Shri Sanjay Kumar, Joint Secretary, MoHUA
14. Shri Surender Singh, Joint Secretary, MoSJ&E
15. Dr. Zoya Ali Rizvi, Deputy Commissioner, MoH&FW
16. Shri Anil Subarmanian, Director MHA

17. Sh. P.K Mukhopadhyay, ADG, MoRD
18. Arun Sobti, Deputy Secretary, MHA
19. Shri Purushottam Verma, Deputy Secretary, MDoNER

Copy to:

The Secretaries of

- i. Ministry of Home Affairs
- ii. Ministry of Human Resource Development
- iii. Ministry of Rural Development
- iv. Ministry of Housing and Urban Affairs
- v. Ministry of Social Justice and Empowerment
- vi. Ministry of Skill Development and Entrepreneurship
- vii. Ministry of Tribal Affairs
- viii. Ministry of Health and Family Welfare
- ix. Ministry of DoNER
- x. Department of Financial Services
- xi. Ministry of Law and Justice

## MINUTES OF THE WEB MEETING ON INTER MINISTERIAL CONVERGENCE FOR RESTRUCTURING / INTEGRATION OF SWADHAR GREH AND UJJAWALA SCHEMES WITH OSCs

A Web meeting on Inter Ministerial convergence for restructuring of Swadhar Greh and Ujjawala Schemes was held on 23.06.2020 at 10:30 am under the Chairpersonship of Hon'ble Minister, Ministry of Women and Child Development. The list of participants is at **Annexure-I**.

2. Secretary, MWCD highlighted the importance of the inter-Ministerial convergence and provided the objectives for the meeting in a three-fold manner: (i) The need for convergence with stakeholder Ministries/Departments; (ii) Finding common ground to optimise resources and enhance the efficiency of current schemes; (iii) Enhancing efforts on SDG - 5 'Achieve Gender Equality and Empower all women and girls' and Agenda 32 on the NITI Aayog Strategy for India@75.

3. Statistical Adviser, MWCD made a brief presentation on the three women welfare schemes - Swadhar Greh, Ujjawala, and One Stop Centres (OSCs) and the proposed integration at inter and intra ministry level in detail. Following this, the key asks of MWCD for each Ministry/Department was shared. The presentation is attached at **Annexure II**.

4. Hon'ble Minister expressed her satisfaction on the responses of all the stakeholder ministries and stated that an integrated approach is required towards destitute women, women in conflict with laws and victims of violence. In this regard, a holistic approach is required by different Ministries in convergence with MWCD. This will ensure bringing all efforts under one programme thereby furthering vision of the Hon'ble Prime Minister of 'Maximum Governance, Minimum Government'. As there are different verticals in governance which may get impacted, the SoPs need to be developed and clearly pinpoint the roles and responsibilities of the District, State and Centre and their areas of convergence. Technology will be leveraged for creating the necessary eco-system for the integration. In terms of the three areas of convergence, specific Ministries and their institutions were suggested:

- i. **Recovery** - Ministry of Health and Family Welfare, NIMHANS, NALSA, Ministry of Home Affairs.
- ii. **Rehabilitation** - Department of School Education, Department of Higher Education, Ministry of Skill Development & Entrepreneurship, Ministry of Rural Development and Ministry of Housing and Urban Affairs (for linkages with SHGs through NRLM and NULM), Department of Financial Services (to go beyond bank accounts to access to credit through PM Mudra Yojana). For rehabilitation of women under the target group it was suggested that possibilities of amalgamation of Ministry of Skill Development & Entrepreneurship and Ministry of Human Resources may be explored.

iii. **Reintegration** - NIMHANS, NALSA, District Authority.

Further, in case of victims who are disabled the Ministries like Social Justice & Empowerment and Tribal Affairs will have to make special efforts to facilitate them. The Ministries would be cross-cutting across areas to encourage empowerment to those from socially challenged backgrounds. The entire Government of India will be branded as a collective mechanism for women empowerment and help women in distress. A significant step for this is to map organisation and institutes which would create the foundation for MHA to track and align them with local police stations for enhanced safety. It was suggested that pragmatic solutions are necessary especially in the North Eastern Regions where trafficking is a major issue. The officials from different Ministries should come together for deliberation to develop a common documents i.e. SoPs for different verticals and accountability. These documents upon completion may be shared with the States for their inputs. **The representatives were requested to provide their inputs on the presentation and the discussion held in the meeting under the categories of recovery, rehabilitation and reintegration to make a robust document.**

**Action Points**

The action points and the corresponding stakeholders for enhancing benefits of Government schemes received by women and their children in shelter homes have been provided as below:

**1. Enhancing safety of women:** Mapping of shelter homes with nearest police station for quick disposal of any complaints (if any), safety and security of inmates.

**(Action: MHA, NALSA  
Timeline-5 th Aug 2020)**

**2. Extending healthcare benefits to women:** Benefits of schemes such as NIMHANS, JSY, Anaemia Mukh Bharat, RAN, Ayushman Bharat Health and Wellness Centers, PMJAY, Menstrual Hygiene may be extended to women and their children in shelter homes.

**(Action: MoH&FW  
Timeline 10 th Aug ,2020)**

**3. Extension of education facilities to women and children of homes:** Benefits of schemes such as Samagra Shiksha and Padhna Likhna Abhiyaan may be extended to residents in shelter homes.

**(Action: MHRD  
Timeline 10th Aug ,2020)**

**4. Improving skills and female labour force participation:** Benefits of schemes such as Pradhan Mantri Kaushal Vikas Yojana, SANKALP (National Skill Development

Mission), NERLP may be extended to residents in shelter homes for upgrading skills and improving female labour force participation.

**(Action: MoSDE & DoNER  
Timeline 10th Aug 2020)**

**5. Enhancing financial security among women:** Benefits of schemes PM Jan Dhan Yojana, PM Mudra Yojana and NULM/NRLM may be extended to residents in shelter homes for improving their financial security, empowerment and access to credit.

**(Action: DFS, MoRD & MoHUA  
Timeline 10th Aug 2020)**

**6. Addressing mental health needs and legal support to women:** Management of mental health needs of women and adequate legal support in shelter homes must be provided to women affected by violence/in distress.

**(Action: MoHFW, NIMHANS, NALSA  
Timeline 10th Aug 2020)**

**7. Promoting asset creation for women:** Benefits of schemes like PM Awaas Yojana (Grameen/Urban) may be extended to women in shelter homes. This will not only provide housing facility but also enable the creation of assets for women, ultimately leading to their empowerment.

**(Action: MoRD and MoHUA  
Timeline 10th Aug 2020)**

**8. Addressing concerns of vulnerable women and girls:** Extending benefits of schemes such as Eklavya Residential Model Schools, Finance Assistance for Skill & Entrepreneurial Development etc. as well as overall development of women and their children in shelter homes belonging to the most vulnerable sections including tribal communities, disabled, and senior citizens.

**(Action: MoSJE, MoTA, DoNER  
Timeline 10th Aug 2020)**

**9. Mapping of relevant Institutes and organisations of the Ministry/Department:** Ministries may map relevant institutes and organisations at the local level for enhancing the convergence approach for women welfare schemes. This may also include Autonomous Bodies and NGOs.

**(Action: All Stakeholder Ministries/Departments  
Timeline 10th Aug 2020)**

**10. Taking the lead in Recovery, Rehabilitation and Reintegration Strategy:** To maximise efforts and create a robust approach for convergence of women welfare

schemes, Ministries may take a lead in strategies of Recovery, Rehabilitation and Reintegration. Stakeholder Ministries may commence efforts with relevant Ministries.

**(Action: All Stakeholder Ministries/Departments**

**Timeline 20th Aug 2020)**

**11.** The Ministry of Home Affairs and Ministry of Health and Family confirmed their support and assured collaboration for coming up with the documents jointly.

**(MHA & MoHFW**

**Timeline 10 th Aug 2020)**

**12.** Under the Chairpersonship of the Hon'ble Minister (MWCD) the Secretary, MSDE may take ahead discussion with Secretary (Higher Education), MHRD and MWCD. This is in reference to the rehabilitation of women under the target group and to look at possibilities of amalgamation of purpose (Skill development) of the Ministries.

The meeting ended with a vote of thanks to the Chair and the officials of participating Ministries.

\*\*\*\*\*

## Annexure-I

### List of Participants in the Web meeting on Inter Ministerial convergence for restructuring of Swadhar Greh and Ujjawala Schemes held on 23.06.2020 under the Chairpersonship of Hon'ble Minister, Women and Child Development.

1. Smt. Smriti Zubin Irani, Cabinet Minister, MWCD
2. Ms Debasree Chaudhuri, Minister of State, MWCD
3. Shri Ajay Tirkey, Secretary, MWCD
4. Shri Praveen Kumar, Secretary, MSDE
5. Sh. Ashish Srivastava, Joint Secretary, MWCD
6. Ms. Aastha Saxena Khatwani, Joint Secretary, MWCD
7. Ms Santosh, Statistical Adviser, MWCD
8. Smt. Nita Kejriwal, Joint Sectary, MoRD
9. Smt. Punya Salila Srivastava, Joint Secretary, MHA
10. Smt. L.S. Changsan, Joint Secretary, MHRD
11. Shri. Suchindra Mishra, Joint Secretary, DFS
12. Shri A. K. Singh, Joint Secretary, MTA
13. Shri Sanjay Kumar, Joint Secretary, MoHUA
14. Shri Surender Singh, Joint Secretary, MoSJ&E
15. Dr. Zoya Ali Rizvi, Deputy Commissioner, MoH&FW
16. Shri Anil Subarmanian, Director MHA
17. Sh. P.K Mukhopadhay, ADG, MoRD
18. Arun Sobti, Deputy Secretary, MHA
19. Shri Purushottam Verma, Deputy Secretary, MDoNER
20. Shri Manish Kumar Singh, Under Secretary, MWCD
21. Shri Abhimanyu Mann, Consultant, MWCD

# Inter Ministerial Convergence for Women Welfare Schemes

Ministry of Women and Child Development

Government of India

23.06.2020



# Introduction



- Overview of Swadhar Greh, Ujjawala and One Stop Centre schemes
- Gaps & Challenges
- Possible restructuring of Swadhar Greh & Ujjawala schemes
- Need for Convergence
- Key Asks for Inter-Ministerial convergence

# Women Welfare Scheme – Swadhar Greh

- Swadhar Greh is a Centrally Sponsored Scheme to provide shelter facilities to women affected by domestic violence with the following objectives:
  - a) To cater to primary needs;
  - b) To enable in regaining emotional strength;
  - c) To provide legal aid and help readjustment in family/society
  - d) To rehabilitate economically;
  - e) To enable them to start their life afresh
  
- A woman can stay in a Swadhar Greh for a maximum period of 3 years or till 60 years of age, whichever is earlier.
- A maximum of 30 women may be accommodated in one Swadhar Greh.
  
- Presently, there are 419 Swadhar Grehs in the country with 12,608 inmates.

# Women Welfare Scheme – Ujjawala



- ▶ Ujjawala is a Centrally Sponsored Scheme with the following objectives:
  - a) To prevent trafficking of women and children;
  - b) To facilitate rescue of victims;
  - c) To provide rehabilitation services;
  - d) To facilitate reintegration of victims into family/society;
  - e) To facilitate repatriation of cross-border victims to their country of origin.
  
- ▶ A maximum of 50 women can be accommodated in one Ujjawala home. Accommodation is provided for long term.
  
- ▶ Presently, there are 140 Ujjawala homes in the country with 5,076 inmates .

# Women Welfare Scheme – One Stop Centre

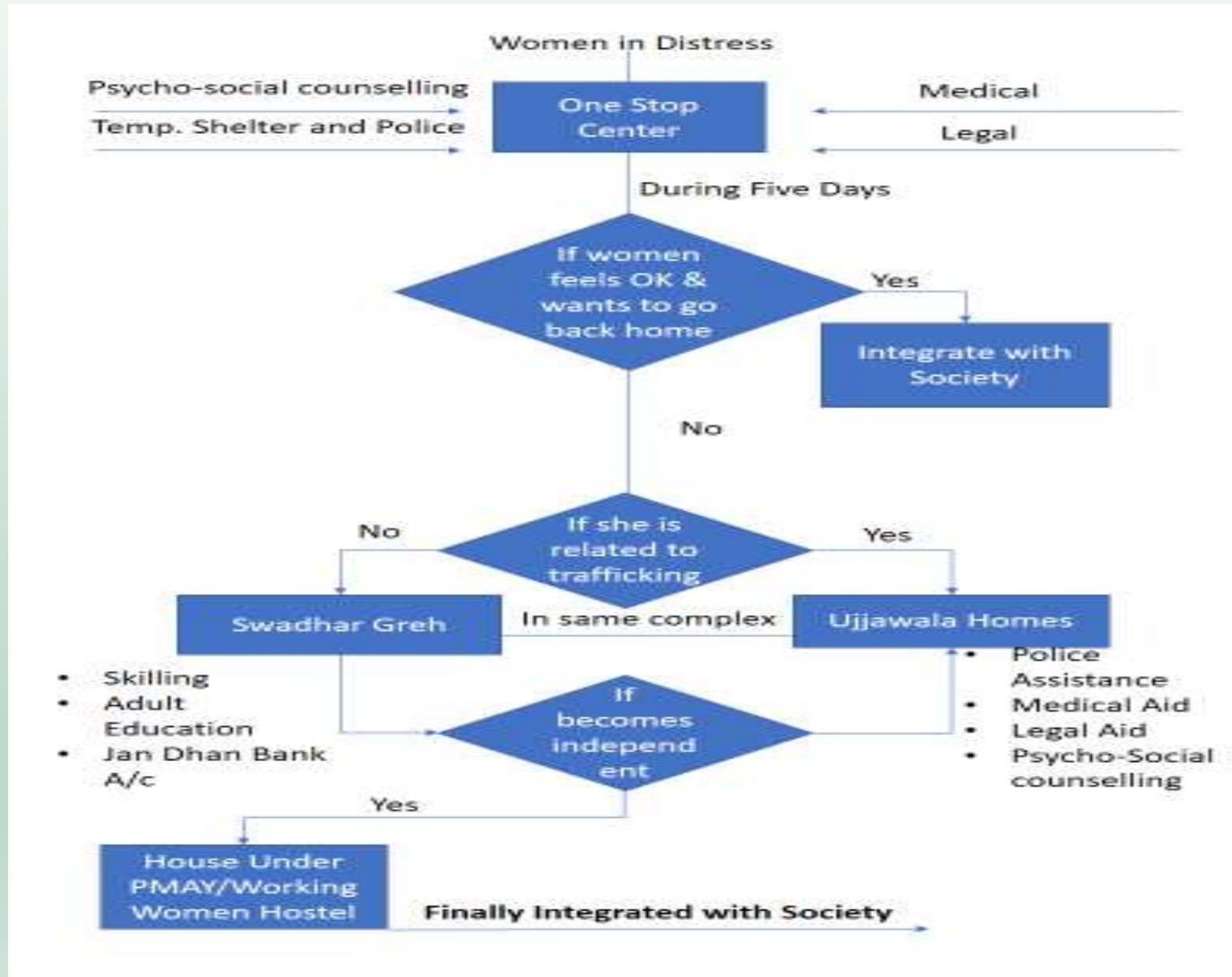
- One Stop Centre Scheme provides access to medical and legal support, psychological counselling, police facilitation and temporary shelter upto 5 days in an integrated manner under one roof to violence affected women.
- Presently, 683 OSCs are operational.
- Monitoring of implementation is possible in real time over *Sakhi* Dashboard.

# Gaps & Challenges



- Need for stronger convergence across schemes and initiatives of various Ministries.
- Data convergence and sharing.
- Optimizing the institutional capacities of these homes.
- Over-dependence on NGOs and State Governments leads to difficulty in implementation and fund usage.
- Women above 60 years have to move out of Swadhar Grehs
- Proximal availability of Swadhar and Ujjawala Scheme facilities to OSC facilities with clear operational convergence.

# OSC, Swadhar & Ujjawala Convergence



# Possible Re-Structuring of Swadhar & Ujjawala Schemes

Subject to concurrence by NITI and competent approvals

- These Schemes may be run as Central Sector Schemes (100% Central Funding direct to District Collectors).
- OSCs can function as *First-POCs* for these shelter homes (alongwith the homes themselves).
- Overcoming the situation of complete dependency on NGOs in some cases, through direct responsibility of administrative delivery on District Collector.
- Stronger monitoring mechanism for standardization of services and facilities.

# Possible Re-Structuring of Swadhar & Ujjawala Schemes

Subject to concurrence by NITI and competent approvals

Addressing in 3 broad domains the needs of women in these institutions:

- Recovery:– Through better coordination with local police for emergence-from-distress + Through stronger and more stable, preferably full time, availability of medical, psycho-counselling and legal support services.
- Rehabilitation:– Through stronger convergence with adult-&-life-skills-education, skilling and financial-inclusion initiatives,
- Re-integration:- Sociological and administrative support for re-integration into their homes and societies (including repatriation where needed)



# The Need for Convergence of Schemes

At GOI Level	At MWCD Level	At State Level
<p>To ensure that maximum benefits through schemes across Ministries reach the distressed women and girls in these institutions.</p> <p>To augment the SDG 5 target of women empowerment and gender equality (UN Agenda 2030).</p>	<p>To avoid duplication of activities and ensure efficient use of infrastructure, human resources and fund.</p>	<p>To ensure that maximum benefits of State schemes reach the inmates of shelter homes.</p>

# Required Areas for Inter Ministerial Convergence

Explicit coverage of the inmates of these homes through

- Janani Suraksha Yojana
- Anaemia Mukta Bharat (under NHM)
- Rashtriya Aarogya Nidhi
- Ayushman Bharat, Health and Wellness Centres, including management of mental health ailments
- Pradhan Mantri Jan Arogya Yojna (PM-JAY)
- Initiatives for promotion of menstrual hygiene
- Other similar schemes and initiatives

+ Functional linkage of Shelter Homes with the District Hospitals

## Required areas of convergence with MHRD

Extend benefits of Samagra Shiksha Abhiyan, Adult & Life Skills Education etc. to the inmates of these homes (and their children).

## Required areas of convergence with MoSDE

Extend benefits of Pradhan Mantri Kaushal Vikas Yojana and Sankalp under National Skill Development Mission for upgrading their skills as per market demand.

This will facilitate their rehabilitation and improve female labour force participation.

## Required areas of convergence with DFS

Ensure self-dependence of the inmates through financial inclusion under

- PM Jan Dhan Yojana
- Prime Minister Mudra Yojana
- Any other schemes, initiatives

## Required areas of convergence with MHA

Emergency/ rescue

Safety and security of inmates

Functional linkages with local police

Cooperation in data/information sharing

## Required areas of convergence with MoRD & MoUD

Extend benefits to inmates during their rehabilitation and reintegration into society through:

- Deen Dayal Antyodaya Yojana National Livelihood Mission (DAY-NRLM/DAY- NULM)
- PM Awaas Yojana(Rural/Urban)

This will not only provide housing facility but also enable the creation of assets for women, ultimately leading to their empowerment.

## Required areas of convergence with MoSJE

Extend benefits to inmates in the form of social protection through:

- Meeting special needs about care, skilling, self-dependence of inmates with disabilities.
- Addressing issue of shifting of women of age 60 yrs or above from Swadhar Greh to Old Age Homes.

## Required areas of convergence with MoTA

Extend benefits under:

- Eklavya Model Residential Schools to children of inmates to provide quality middle and high level education
- Enrolment in Central sector Scholarship schemes for the able and willing beneficiaries.

## Required areas of convergence with DoNER

Improve rural livelihood in North East Regions:

- North East Rural Livelihood Project (NERLP), especially for women, unemployed youth and the most disadvantaged.

**THANK YOU**