



नए समाज की ओर  
Towards a new dawn



Ministry of Women and  
Child Development  
Government of India



# Beti Bachao Beti Padhao

Operational Manual







# Beti Bachao Beti Padhao

Operational Manual







**SMT. SMRITI ZUBIN IRANI**

Hon'ble Minister, Women and Child Development

Keeping up with the national ethos of collective action for Women led Development by the year 2025, "Beti Bachao Beti Padhao (BBBP)" continues to be the bedrock of all initiatives calling for concerted action to harness the potential of our "Nari Shakti", as envisioned by the Hon'ble Prime Minister of India. Recognizing the fact that the brand equity of Beti Bachao Beti Padhao has become a byword and is recognized as an emblem to "Save the Girl Child", the scope of the scheme has been expanded, both geographically and programmatically to focus on multi-sectoral activities for tangible benefits at district level.

The Operational Manual has been developed to serve as a beacon and a practical guide for encouraging synergy through convergence and planned sectoral interventions with all efforts/schemes of Government of India at grassroot levels towards realization of our aspiration of an '*Atmanirbhar Bharat*'.

It is my heartfelt desire that Beti Bachao Beti Padhao should lead the narrative and become a cornerstone for all schemes/programmes and policies at all levels for the safety, protection and empowerment of the girl child through life cycle continuum. I, therefore, urge all stakeholders to come together and join hands in making this scheme a success for best interest of the Girl Child.





**Dr. Munjpara Mahendrabhai**

Minister of State, Women and Child Development

Over the last seven years, through focused advocacy Beti Bachao Beti Padhao has been able to capture the attention of political leadership and national consciousness towards valuing the girl child. Now, it is time to focus on achieving measurable outcomes related to the development and protection of the girl child, as envisaged under the scheme.

Gender equality should be our first stipulation as a nation, and it should start with every person in every family.

With Beti Bachao Beti Padhao, let's all pledge to get rid of every aspect of our behaviour, culture and everyday life that devalues, humiliates and discriminates against women and girls. As said by our Hon'ble Prime Minister, Women's pride is going to be a huge asset in fulfilling the dream of the Nation and our 'Nari Shakti' will take the country to a new height. The more attention we pay to valuing girl child, the more opportunities and facilities we provide to our daughters, the more we pave for building the road for an equitable society, the richer will be our dividend in terms of 'Amrit Kaal' and in achieving Sustainable Development Goals.

**SHRI INDEVAR PANDEY**

Secretary, Ministry of Women and Child Development

The scheme Beti Bachao Beti Padhao has been brought as one of the components under the Sambal sub-scheme of Mission Shakti, which is a scheme in a mission mode, aimed at strengthening interventions for women and girls' safety, security and empowerment to enable them to be equal partners in nation-building through convergence and citizen-ownership.

The Mission Shakti guidelines have been published for all components of the scheme, with the overall framework, machinery and details of the structures being put in place for the implementation of all sub-schemes together. To delineate the efforts necessary at all levels for Beti Bachao Beti Padhao, this manual has been developed as an adjunct to the guidelines to aid the states and districts in achievement of the goals of the scheme in a concerted manner.

This manual will be useful to guide those who are involved in the planning, implementation, reporting and monitoring of the scheme from the national level to the grassroot level. Different sections of the manual list down the activities and processes to be undertaken by various officers and experts under several ministries for an active and cohesive convergent effort for protection and empowerment of the girl child. The manual will also be useful for the Public Sector Undertaking, civil society, academia and businesses looking to collaborate and partner with MWCD and other related Ministries/Departments for achievement of Beti Bachao Beti Padhao goals.

## ABOUT THE MANUAL

---

This Beti Bachao Beti Padhao operational manual has been divided into three broad sections for ease of navigation and understanding. The first section contains the introduction and overall background of the scheme with regard to its objectives, targets and audience. The other two sections have been segregated into a activities manual (containing the directives for a holistic and robust implementation of the scheme activities for various stakeholders and the necessary convergent action for the same) and an administrative manual (comprising of the operational instructions at all levels of administration from National to District level).

This manual has been developed with some innovative tools that have been streamlined and specifically designed to aid the implementation machinery in a sustained and inclusive manner round the year. The Beti Bachao Beti Padhao activity calendar is being introduced in the manual for guided interventions, along with a template for recording innovation and best practices. A special mechanism of performance ranking of districts will also be done with the help of District Score Card being introduced in the manual.



# CONTENTS

<b>MINISTER'S MESSAGE</b>	<b>v</b>
<b>FOREWORD</b>	<b>vi</b>
<b>PREFACE</b>	<b>vii</b>
<b>ABOUT THE MANUAL</b>	<b>viii</b>
<b>INTRODUCTION</b>	<b>2</b>
<b>AIM</b>	<b>2</b>
<b>ACTIVITIES MANUAL</b>	<b>3</b>
<b>Capacity Building</b>	<b>3</b>
Social and Behaviour Change Communication (SBCC)	4
Participation and Inclusion	5
Reward and Recognition	6
Innovation	6
<b>Convergent Action</b>	<b>8</b>
Activity Calendar	12
<b>ADMINISTRATIVE MANUAL</b>	<b>13</b>
<b>Organisational Structure</b>	<b>13</b>
National Level	13
State Level	13
District Level	13
<b>Financial Provisions</b>	<b>14</b>
District Action Plan	15
<b>Reporting and Documentation</b>	<b>15</b>
Management Information System (MIS)	16
District Score Card	16
Best Practices Template	16
Evaluation and Audit	16
<b>ANNEXURE</b>	<b>17</b>
Annexure-I Beti Bachao Beti Padhao Calendar	17
Annexure-II District Action Plan	23
Annexure-III District Score Card	24
Annexure-IV Best Practices Template	26
Annexure-V List of the Districts along with Their Allocation	27
List of districts having SRB less than or equal to 918 with allocation @ ₹40 lakh/year	<b>27</b>
List of districts having SRB more than 918 and less than or equal to 952 with allocation @ ₹30 lakh/year	<b>32</b>
List of districts having SRB more than 952 with allocation @ ₹20 lakh/year	<b>43</b>

# INTRODUCTION

**Beti Bachao Beti Padhao (BBBP) Scheme** was launched on 22<sup>nd</sup> January, 2015 to address the issue of decline in Child Sex Ratio (CSR) in the country along with related issues of empowerment of girls and women, over a life cycle continuum. In the 15<sup>th</sup> Finance Commission period, the scheme is being operated/implemented as a component of the Sambal sub-scheme of Mission Shakti.

The scheme, which was earlier **operational in 405 districts, is now being expanded to cover all the districts of the country** through multi-sectoral interventions. This requires horizontal and vertical convergent action with concerned Ministries/Departments and other stakeholders at all levels, for policy and programmatic interventions, outreach, capacity building and communication.



**Beti Bachao Beti Padhao scheme aims to achieve the following:**

- **Improvement in the Sex Ratio at Birth (SRB)** by 2 points every year,
- **Improvement in the percentage of institutional deliveries** or sustained at the rate of 95% or above,
- **1% increase in 1st Trimester Anti-Natal Care (ANC) Registration** per year, and
- **1% increase in enrolment** at secondary education level and skilling of girls/women per year.
- **To check dropout rate among girls** at secondary and higher secondary levels.
- **Raising awareness about safe Menstrual Hygiene Management (MHM).**

There is no provision for Direct Benefit Transfer (DBT) or creation of capital assets under the Beti Bachao Beti Padhao. The scheme is primarily focused on creating behavioural and social change in the way the girl child is perceived across the country by informing, influencing, motivating, engaging and empowering all stakeholders. It will encourage spending on activities that have ground impact through convergent action.

# ACTIVITIES MANUAL

The Ministry of Women and Child Development (MWCD) is the Nodal Ministry and principally responsible for planning and implementation of the scheme. This section will detail out the activities and steps to be carried out by different ministries at different levels of administration along with the defined strategy and broad indicative timelines. The activities mentioned in the boxes are mandatory by nature, and districts must ensure compliance with these activities.

In adherence to the core Beti Bachao Beti Padhao strategies, and following the suggestive Beti Bachao Beti Padhao calendar, the activities to be undertaken by all Departments and Units under the Ministry, at all levels of governance are:



## CAPACITY BUILDING

Beti Bachao Beti Padhao training and capacity building will take into account the needs and modalities of diverse stakeholders and will include the following:

### Orientation and Sensitization of:

- ▶ All State level and District Level committees, SHEW/ DHEW about Beti Bachao Beti Padhao, its goals, processes, tools and their respective roles in it.
- ▶ **Front-line workers – AWWs, ASHAs, ANMs, SHG members on Beti Bachao Beti Padhao and their role in the activities and events for protection and promotion of girl child.**
- ▶ CBOs, CMOs, doctors, nurses and other medical practitioners for their role and responsibility in ensuring strict enforcement of PC&PNDT Act and how to sensitize communities for the same.
- ▶ Officers in the District, Zila Parishad, District Level Centre for Women, District Legal Services Authority (DLSA), and other stakeholders like NGOs, pressure groups and interest groups.





**Tracking child marriages and taking strict actions to stop them**

- ▶ Teachers, principals, school boards, SMCs, DEOs and other school system-related personnel on the importance of the education of the girl child and their respective role in implementing Beti Bachao Beti Padhao at the school level.
- ▶ **NYK, NSS, Bharat Scouts and other youth groups in their involvement role in the outreach and sensitization activities as per the Beti Bachao Beti Padhao calendar.**
- ▶ Elected representatives (MPs, MLAs, PRI members and Ward members) on their alignment with Beti Bachao Beti Padhao and importance of girl child.
- ▶ Police officers, constables, and Judiciary on gender-sensitive justice that works for promoting the safety and security of the girl child and her ecosystem.
- ▶ Associations- Doctor's Associations, Teacher's Associations, Commercial Associations, Community-based Clubs (e.g. Rotary Club, Lion's Club etc.) and others on sensitizing about the value of girl child and tackling gender-related issues **community members on gender equality behaviour, by inculcating the pride of 'Nari Shakti' in everyday life and upholding the dignity of women.**
- ▶ The media on gender-sensitive reporting.
- ▶ Children (girls and boys) and adolescents about their rights, entitlements, schemes and facilities available to them as well as their duties as responsible citizens.



## **SOCIAL AND BEHAVIOUR CHANGE COMMUNICATION (SBCC)**

### **Outreach**

- ▶ Display of *Guddi-Gudda* Boards in GPs and public places to exhibit the number of girls born vis-a-vis the number of boys.
- ▶ **Awareness activities with parents/families to better understand the value of girls and their needs.**
- ▶ Positive reinforcements of daughters in the community as providers of old age security.
- ▶ Encouraging reversal of boy/son-centric rituals and customs.
- ▶ Preparation of communication and IEC material for display and distribution in community and public places with high footfall.
- ▶ **National Girl Child Day to be celebrated by all stakeholders** including local opinion makers, PRI members, MLAs, MPs etc. at District levels, led by the DCs/DMs.
- ▶ Pledge for protection, safety, value and education of the girl child may be adopted by Government of India and all government functionaries on National Girl Child Day every year.
- ▶ Organise awareness campaigns at grassroot level for gender equity and awareness generation to fuel the demand by women and girls for delivery of services under different schemes/programmes meant for them.

**National Girl Child Day to be celebrated on 24th January every year**



## PARTICIPATION AND INCLUSION

- ▶ Inclusion of Local Religious/Spiritual Leaders in advocacy and community mobilization initiatives to boost the acceptance of such efforts by the community.
- ▶ **Local Beti Bachao Beti Padhao Champions:** All the efforts suggested above may be led by strategic involvement of local opinion and change makers who can set positive examples and serve as champions.
- ▶ **Community support groups to reinforce peer sharing and learning, while local media can create pressure through culturally appropriate media coverage.**
- ▶ DC/DM may reach out to MLAs, Parliamentarians, elected women representatives of PRIs and ULBs, girls/women excelling in the field of sports, education, entrepreneurship, etc. to serve as Local Champions of this campaign.
- ▶ Women and girls from different communities should be included in the participation and decision making on issues affecting their life and communities.
- ▶ **Special efforts must be made to include men and boys on discussion around gender roles, gender-based socialization, division of labour within families and other issues like child marriage, gender-based violence and harassment.**
- ▶ Specific campaigns like 'Selfie with Daughters' targeted at fathers with girl child.
- ▶ Organising monthly sessions of women's/girls' support groups in the local community centre.
- ▶ Bal Sabhas for mobilizing and bringing together adolescents for efforts to end child marriage, violence against girls and other related issues.



## REWARD AND RECOGNITION

- ▶ Felicitate champions who helped stop Child Marriage.
- ▶ Identify individuals or Civil society organisations doing exemplary work in line with Beti Bachao Beti Padhao Scheme for felicitation by DCs/DMs.
- ▶ Encourage girl achievers from the fields of academics/sports/culture/social work/science etc.
- ▶ Incentivize meritorious girls and their families as appreciation on Beti Bachao Beti Padhao Day/National Girl Child Day/International Women's Day/Independence Day/Republic Day etc.
- ▶ Highlight exemplary case studies of girls, in the local media, who succeeded despite odds, and stories of families who promoted their daughters despite their struggles.



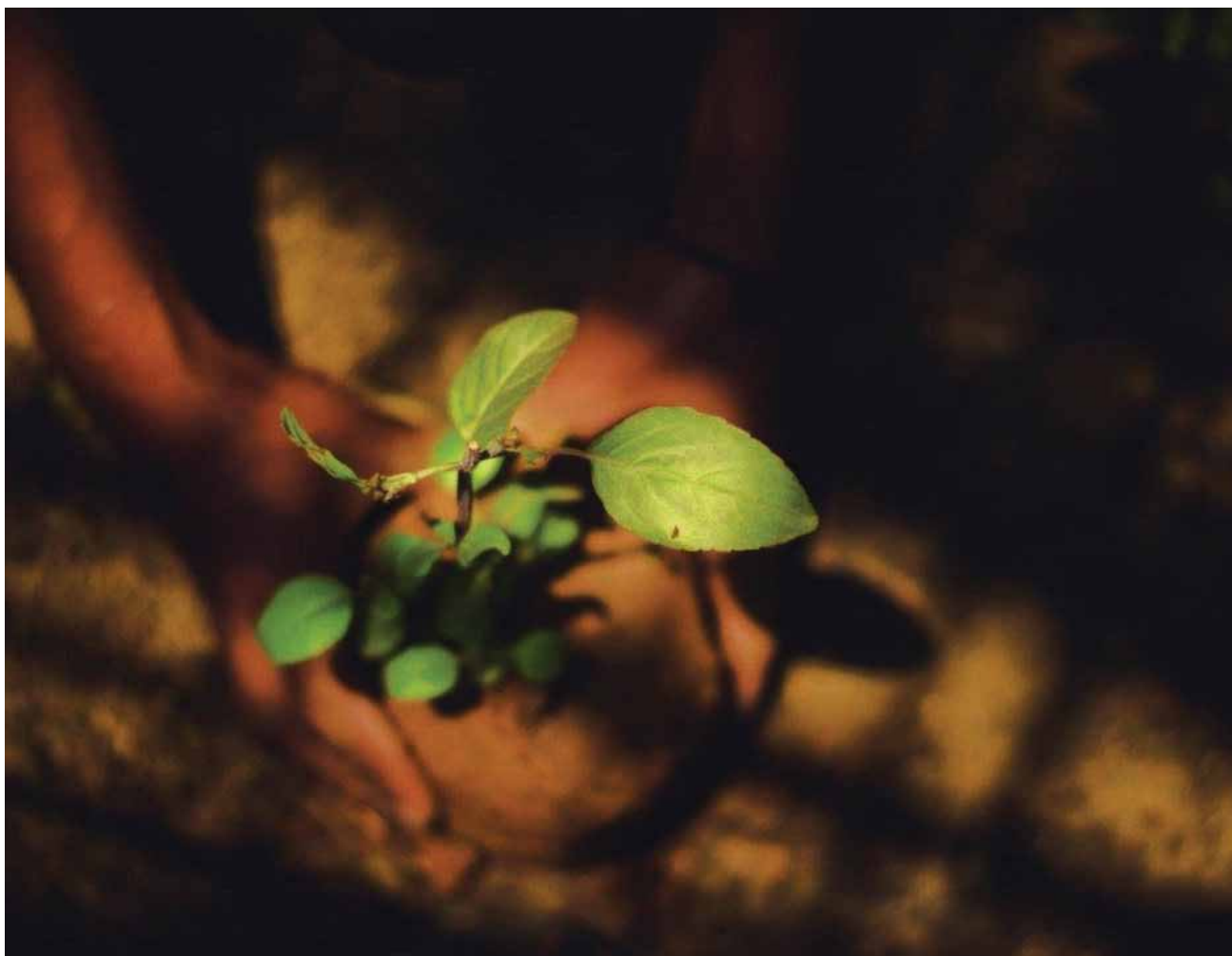
## INNOVATION

- ▶ Advocacy efforts and community mobilization initiatives like celebrating *Lohri* for the birth of a daughter, siblings tying *rakhis* to each other on *Raksha Bandhan*, teaching cooking and driving to both sons and daughters together etc.
- ▶ Social customs promoting son preference and sex selection and those that prefer men and boys over women and girls may be reversed gradually in order to foster gender equality.



**Tree Plantation  
in the name  
of girl child by  
the District  
administration**

- ▶ Promotion of Simple Weddings (or even *Samuhik Vivahs*) at right age to protect parents from financial burden of dowry and ostentatious marriage ceremonies.
- ▶ Promotion of Equal Property Rights for daughters and sons in the community.
- ▶ Prevention of Early/Child Marriage to promote girls to complete their education and fulfill their dreams.
- ▶ **Special efforts for prevention of child marriage on *Akshaya Tithiya*, organised on a massive scale in different parts of India.**
- ▶ Exploring scope of using Beti Bachao Beti Padhao logo with ministries/departments with higher public interface in their respective IEC material and public displays.
- ▶ **Email Signatures of Government officials may have the embedded social message of *Beti Bachao Beti Padhao*** for creating a brand identity and ownership of the Campaign at District Levels. NIC or any other appropriate bodies at State/UT can facilitate the same.
- ▶ **Plantation drive of trees in the name of girl child:** District to organise plantation drive where at least 5 trees are planted for the celebration of the birth of girl child.





# CONVERGENT ACTION

## MINISTRY OF EDUCATION

### DEPARTMENT OF SCHOOL EDUCATION AND LITERACY

- ⦿ Facilitate construction and maintenance of functional toilet for girls in schools.
- ⦿ Capacity building of teachers to impart education in a gender-sensitive manner.
- ⦿ Training young and adolescent boys and girls about gender equality.
- ⦿ Campaign for increased participation of girls in vocational training in schools.
- ⦿ Convergence under National Means-cum-Merit Scheme.
- ⦿ Introduction of more life skill activities at school.
- ⦿ Systematic career counselling to be provided to girls to plan their future and avoid early marriage.
- ⦿ Greater investment in STEM education for girls and inculcating a scientific aptitude by more exposure visits to museums, planetariums, Atal Tinkering Labs etc.
- ⦿ Introducing Self-Defence Training for girls in government schools.
- ⦿ Displaying pictures of strong female pioneers with a small tableau about their achievements in all school halls and corridors.
- ⦿ Promoting more fairs and exhibitions in all schools along with field trips to science colleges, ITIs and Polytechnics to show prospects of transition to higher education.
- ⦿ Making available sanitary napkin vending machines and sanitary pads in educational institutions.



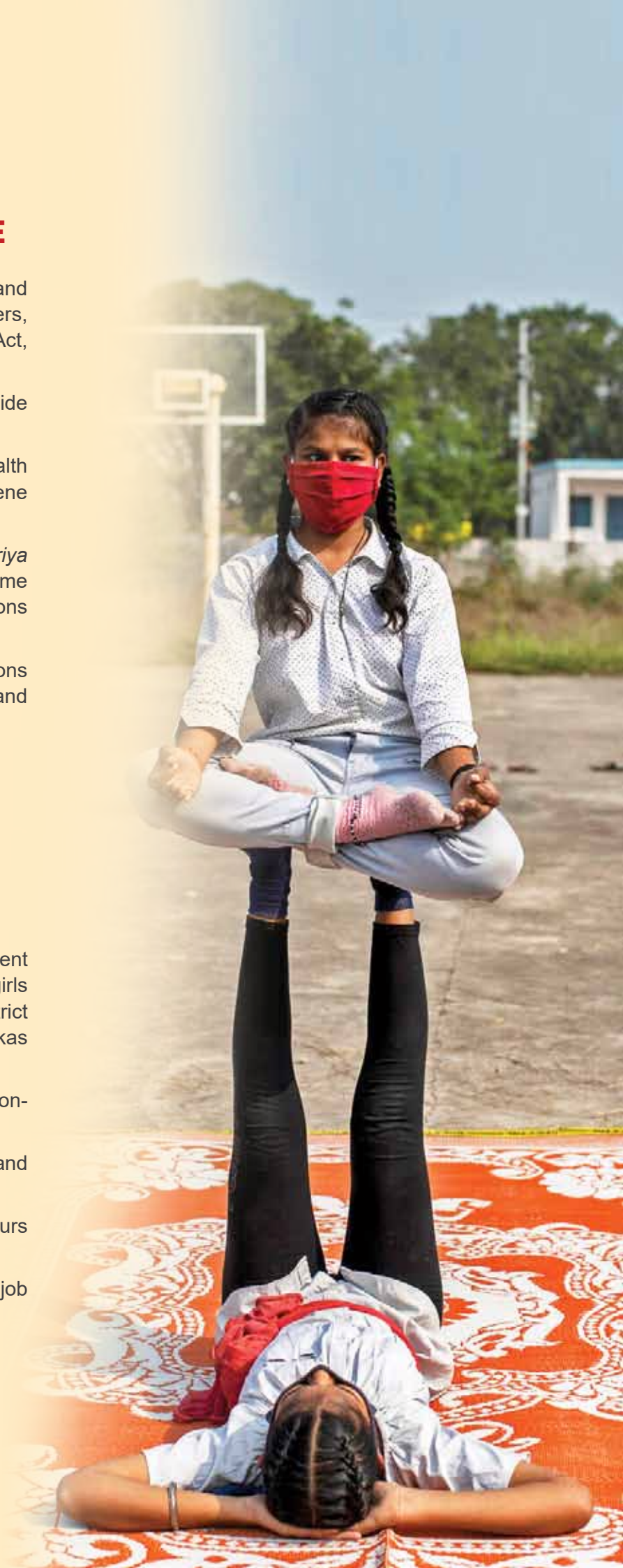


## MINISTRY OF HEALTH AND FAMILY WELFARE

- ⦿ Conduct awareness campaigns and sensitization of all the stakeholders, including public, about PC&PNDT Act, MTP Act.
- ⦿ Conduct decoy operation and provide rewards to informers.
- ⦿ Convergence for Nutrition and Health Education including menstruation hygiene behaviour.
- ⦿ Linking and strengthening *Rashtriya Kishor Swasthya Karyakram* programme at grassroot level and open discussions on ending stigma on menstruation.
- ⦿ Organising special awareness sessions on Child Sexual Education with girls and boys.
- ⦿ School Health Ambassador Initiative.

## MINISTRY OF SKILL DEVELOPMENT AND ENTREPRENEURSHIP

- ⦿ Organise awareness and enrolment drives to increase the enrolment of girls in skilling programmes in each district through Pradhan Mantri Kaushal Vikas Yojana (PMKVY).
- ⦿ Encouraging girls to take on more non-traditional skill trades.
- ⦿ Greater focus on vocational and employability skills for girls.
- ⦿ Connecting Girls/Women entrepreneurs to finance and market.
- ⦿ Organising career counselling and job fairs at skilling centres.





## MINISTRY OF YOUTH AFFAIRS AND SPORTS

### DEPARTMENT OF YOUTH AFFAIRS

- ⦿ Awareness and Community Mobilization through Nehru Yuva Kendra Sangathan (NYKS) Volunteers and other youth-led groups.
- ⦿ Use Beti Bachao Beti Padhao logo for the events and schemes run by Department of Youth Affairs.
- ⦿ Youth parliaments in major cities with equal representation from girls.

### DEPARTMENT OF SPORTS

- ⦿ To identify sporting talent among girls to promote female participation in sports on equal footing.
- ⦿ To make girls sports teams in all schools for all available sports.
- ⦿ To encourage successful sports persons to become brand ambassadors for spreading Beti Bachao Beti Padhao message at grassroots level.
- ⦿ To give Beti Bachao Beti Padhao branded award to the best girls in sports in schools.
- ⦿ To organise Run for Girl Child with torch bearers being Beti Bachao Beti Padhao champions and ambassadors.

## MINISTRY OF MINORITY AFFAIRS

- ⦿ Providing Skill training to girls in modern trades with an objective of improving employability and livelihood for marginalized minorities.
- ⦿ Providing open schooling certification for girl students and impart high quality skill training including soft skills leading to productive employment.
- ⦿ Imparting training to the girls from the minority community in traditional products and handicrafts and promotion of their products through *Hunar Haats*.

## MINISTRY OF HOME AFFAIRS

- ⦿ Identify exceptional performing and gender sensitive police personnel as Beti Bachao Beti Padhao Champion.
- ⦿ Conduct sensitivity training of police officers and personnel for more gender responsive justice and service delivery.
- ⦿ Increase in Police outreach in schools and colleges through Mahila Police Help Desks at the District level.
- ⦿ Exposure visits to Police stations, *mahila thanas* and interaction with police personnels in order to make these institutions more approachable and accessible to children and young adults.



## MINISTRY OF RURAL DEVELOPMENT

### DEPARTMENT OF RURAL DEVELOPMENT

- ⊙ Convergence under State Rural Livelihood Mission (SRLM).
- ⊙ Convergence with Social Action Committee.

## MINISTRY OF HOUSING AND URBAN AFFAIRS

- ⊙ Form community watch groups for identifying the illegal practice of sex selection, child marriage.

## MINISTRY OF PANCHAYATI RAJ

- ⊙ Form community watch groups for identifying the illegal practice of sex selection.
- ⊙ Develop Child and Gender Friendly Panchayat on a pilot basis.
- ⊙ Organise training and capacity building sessions with members of Panchayati Raj Institutions (PRIs) on value of girl child and implementing Beti Bachao Beti Padhao activities in their Gram Panchayats (GPs).
- ⊙ Organising Bal Sabhas in all GPs. Training, hand holding and felicitation of youth leaders in these Sabhas.







## ACTIVITY CALENDAR

A detailed and well-rounded suggested Activity Calendar (Format in Annexure I) for the districts has been developed in consultation with expert agencies, state departments and international organisations working with the girl child to ensure year-round engagement of girls, their families and communities. Several activities have been suggested within each month; however, the districts can choose to conduct their own activities based on their local context and needs:

- ▶ Each calendar month has a theme assigned to it based on any important national or international date falling within that month. Most of the months have an outlined convergent ministry/department, with whom focused efforts would be made to achieve the objectives of Beti Bachao Beti Padhao within that month. The rationale for selecting any particular theme has also been laid down in the calendar.
- ▶ Proposed weekly focus areas within a particular month have also been suggested along with the relevant activities. The idea is to cover all aspects of holistic development of the girl child and their ecosystem within a particular domain of development.





# ADMINISTRATIVE MANUAL

## ORGANISATIONAL STRUCTURE

The administrative setup for Beti Bachao Beti Padhao would be in line with and embedded within the larger framework of Mission Shakti, at all levels of implementation.

The broad structure for improving access and utilization of government schemes by women can be found in the figure below.



### NATIONAL LEVEL

A committee headed by the Secretary, Ministry of Women and Child Development, made under the larger Mission Shakti mandate, will be the **Apex Committee** to review implementation of Beti Bachao Beti Padhao at regular intervals with the State Governments/UT administration.

The Committee shall meet at least once in a year preferably in the month of April and monitor the progress of the overall scheme activities and status of achievement of objectives.

At Central Level, Beti Bachao Beti Padhao, as a part of Mission Shakti, will be looked after by a single and dedicated PMU called **National Hub for Empowerment of Women (NHEW)**. The NHEW has two verticals, one for administrative work and other for specialized and dedicated services for coordination and convergence.



### STATE LEVEL

The overall implementation of Beti Bachao Beti Padhao at State/UT level will be done by a Committee, made for Mission Shakti, headed by the Chief Secretary. The committee will constitute officers from the Department of Women and Child Development, Social Welfare Department and other relevant departments of concerned States/UTs.

At State Level, a dedicated PMU, Mission Shakti **State Hub for Empowerment of Women (SHEW)** will work for all Beti Bachao Beti Padhao related convergence/coordination with Central Ministries as well as districts.



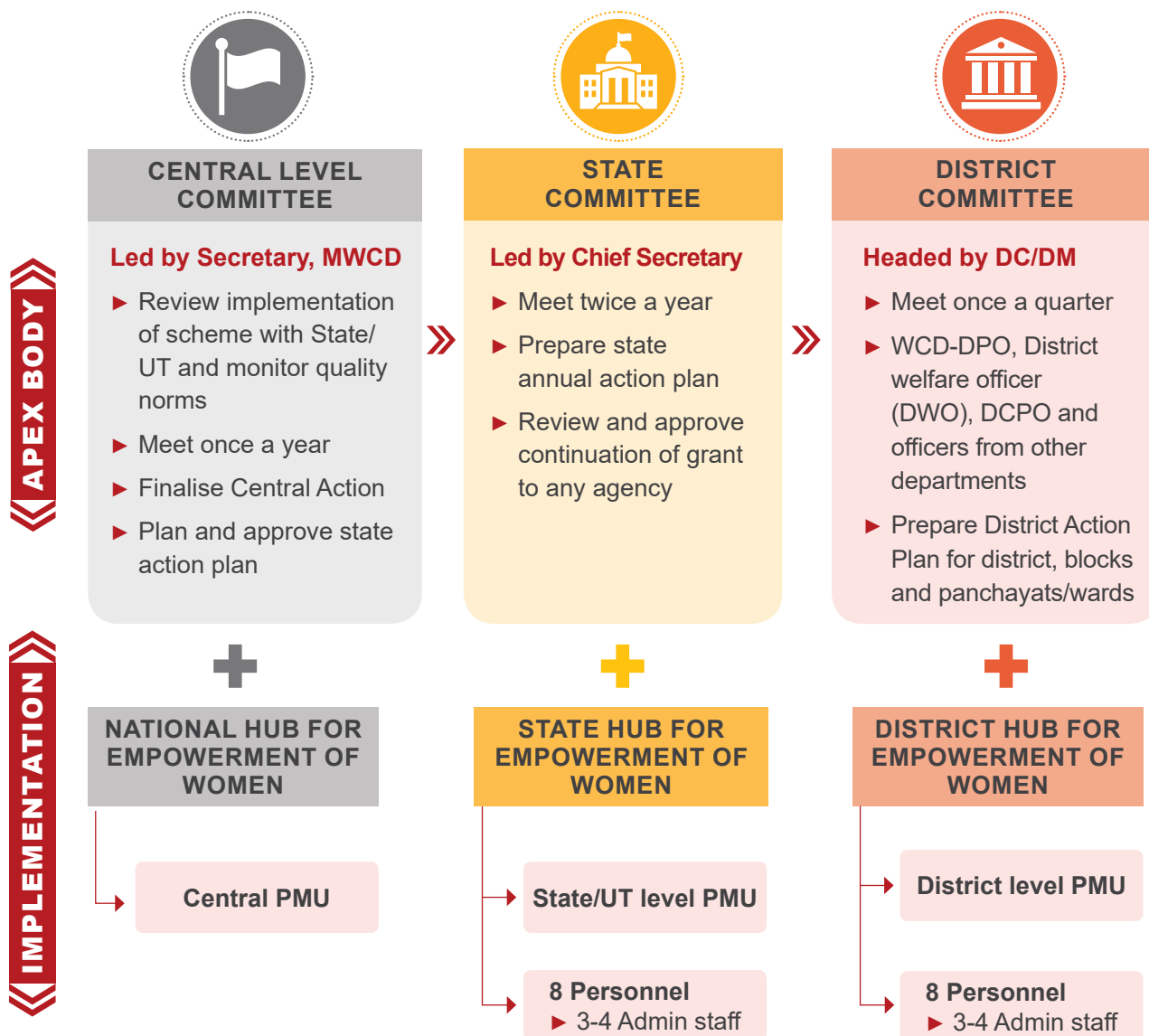
### DISTRICT LEVEL

The overall implementation of Beti Bachao Beti Padhao at District level will be done by the Mission Shakti Committee headed by District Magistrate/District Collector and constituting officers in charge of the Women and Child Development Department (DPO/DWO/DCPO etc.) and other nodal departments.

The Committee will also prepare the District Action Plan (Format in Annexure IV). Any partnership with civil society organisation, academic institutions and other external agencies can also be done by districts for strategic interventions.

At District level, the Mission Shakti dedicated PMU, District Hub for Empowerment of Women (DHEW) with financial assistance from MWCD will provide technical/manpower support to State/ District Beti Bachao Beti Padhao machinery.

District Probation/Programme Officer (DPO) at district level will be nodal officer for implementation and execution of Beti Bachao Beti Padhao under the overall supervision of District Magistrate. The nodal officer will ensure that the MIS is updated quarterly.



## FINANCIAL PROVISIONS

Since Beti Bachao Beti Padhao is a component of Sambal sub-scheme, as per para 3.3 of Mission Shakti guidelines, 100% funding will be provided by the Central Government. Additionally, as per Annexure V of Mission Shakti guidelines, the financial allocation under Beti Bachao Beti Padhao would be as follows.

	Per Annum	Existing unit	No. of units 2021-22	No. of units 2022-23	No. of units 2023-24	No. of units 2024-25	No. of units 2025-26
Districts with SRB ≤ 918	40 lakh	405	405	169	169	169	169
Districts with SRB > 918 and ≥ 952	30 lakh			347	347	347	347
New Districts*	30 lakh			21	21	21	21
Districts with SRB > 952	20 lakh			218	218	218	218
<b>Total</b>				<b>755</b>	<b>755</b>	<b>755</b>	<b>755</b>

\*New Districts (total no. 21) whose SRB data is not available on HMIS for the year 2020-21 has been kept under ₹30 lakh. Further, any new district formed in the coming years will also be kept under ₹30 lakh bracket.

The allocation of funds to the districts have been done based on the differential SRB status of districts. When the Beti Bachao Beti Padhao scheme was launched in 2014-15, as per the HMIS data of MoH&FW, SRB at National Level was 918. Further, as per the World Health Organization (WHO), the international standard for natural sex ratio at birth is 952.

In the last seven years, many districts have shown improvement in SRB. However, more efforts are required in districts having SRB less than or equal to 918. Hence, keeping in mind the differential SRB status of districts as per HMIS data of SRB for the year 2020-21, three brackets for release of funds under the Beti Bachao Beti Padhao component have been prescribed as mentioned in the table above.

Under Beti Bachao Beti Padhao component, the grant will be released in one instalment in a year. List of the districts along with their allocation is at Annexure V.

The break-up of district fund is given below.

District Level Fund Breakdown (in Lakhs)			
Sr.No.	Activity/Item	Budgetary Ceiling	Amount (in Lakhs)
1.	Sectoral activities of Department of Women and Child Development <ul style="list-style-type: none"> <li>• Capacity Building</li> <li>• Orientation and Sensitization</li> <li>• Outreach</li> <li>• Innovation</li> <li>• IEC material</li> <li>• Monitoring and Documentation</li> </ul>	50%	
2.	Sectoral activities in Convergence with partner and line Departments	40%	
3.	Flexi Fund	10%	



## DISTRICT ACTION PLAN

A broad indicative template of Annual District Action Plan has been given at Annexure II of this document which will help the Beti Bachao Beti Padhao Committee and the District Hub for empowerment of women to make plans for the districts, as per their requirement with the help of the suggestive Beti Bachao Beti Padhao calendar of activities (Format at Annexure I).

Strategic activities of the Ministry of Women and Child Development, as well as convergent action with other relevant ministries, will be recorded in the District Action Plan quarter-wise, along with the estimated budgeted amount for each activity. The district action plan would be submitted to the State with a copy marked to the Centre in the last quarter of the financial year (FY) for the next FY.

## REPORTING AND DOCUMENTATION

To ensure accountability and service improvement, it is important to document all activities conducted at the District Level related to the Scheme.

Monitoring reports both financial as well as operational performance data (Physical Progress) to be prepared for the scheme by the State Level/District Level Monitoring Committee, as the case may be, on a quarterly basis.



District Nodal officer will ensure that quarterly reporting is done on the MIS portal made by Mission Shakti under the Beti Bachao Beti Padhao section. DPO may be designated as the Coordinating Officer by the DHEW who will be responsible for collating and compiling the quarterly reports for submission in the portal.



## MANAGEMENT INFORMATION SYSTEM (MIS)

A comprehensive web-based reporting system will be developed and put in place by the MWCD to enable real-time monitoring of overall Mission Shakti. The web-enabled monitoring system would be a user-friendly single portal providing easy accessibility while maintaining the confidentiality of data.

It will enable monitoring of the programme including inter alia establishment of service delivery structures; accurate information about the network of institutions available, services being provided, human resources, financial resources and beneficiaries.



## DISTRICT SCORE CARD

District level score card (Format at Annexure III) would be made based on the data extracted from the Mission Shakti MIS. Process indicators and outcome indicators would be captured separately in the district score card. Outcome indicators are divided in the broad category of protection, survival, health, education and development of the girl child. Process indicators are based on the steps taken under institutional mechanisms and broad indicators under capacity building measures undertaken at different levels of implementation of the scheme.

Annual District Beti Bachao Beti Padhao Ranking will be issued by the Ministry as per the District Score Card based on the MIS. This data would also be aggregated at state level to capture state performance.



## BEST PRACTICES TEMPLATE

Many districts have done an exceptional job in achieving the objectives of Beti Bachao Beti Padhao and led several innovative initiatives that can be used by other districts as good learning. Quantitative outcomes can be captured in the MIS portal made by the ministry under Mission Shakti, but the qualitative efforts behind the achievement of those objectives is usually missed out. To capture the process, learning and challenges faced in achieving those objectives, a different reporting mechanism needs to be used.

To capture the lessons learned and these innovative practices at the district level, a Best Practices template has been introduced with this manual in a set format (Annexure IV) to be used by districts to capture the broad achievements they consider as a good practice. Districts are supposed to fill this template and submit it to the state. SHEW will be responsible for compilation of these Best practices at the state level. Each state will submit their best practices compendium to the centre on an annual basis.



## EVALUATION AND AUDIT

The evaluation of the scheme would be conducted by an independent third party agency of repute, to be nominated by MWCD, in consultation with NITI Aayog, at the national and state level.

Audit shall be done as per Comptroller and Auditor General of India norms and that channel will be followed at the Central and State Government levels.

## Annexure - I. Beti Bachao Beti Padhao Calendar

Months	JANUARY					
Themes	Importance of Girl Child	Ministerial Convergence	Suggested list of events		Important Dates	
Rationale	This month features National Day of Girl child		Activity_1	Activity_2	Date	Event
Proposed weekly focus areas	Sex Ratio at Birth	Ministry of Health and Family Welfare	Sensitivity drive	PC&PNDT Act Enforcement Drives	12 <sup>th</sup> January	National Youth Day
	Beti Janmahotsava	Ministry of Women and Child Development	Selfie with Daughter-Digital Campaign	Celebrate contribution of empowered mothers	24 <sup>th</sup> January	National Girl Child Day
	Declaring Beti Bachao Beti Padhao-friendly village/Urban Local Body (ULB)	Ministry of Panchayati Raj/ Ministry of Housing and Urban Affairs	Girl child focused plan	Plantation drives in the name of girl child		
	Focus on girls leadership	Ministry of Skill Development and Entrepreneurship	Felicitation of girls by Sarpanches and Pradhans	Using folk songs and tribal songs on importance of girl child		
Months	FEBRUARY					
Themes	Education	Ministerial Convergence	Suggested list of events		Important Dates	
Rationale	Right window of opportunity for awareness before enrolment begins		Activity_1	Activity_2	Date	Event
Proposed weekly focus areas	STEM Education for Girls	Department of School Education and Literacy, Ministry of Education	Recognizing Women pioneers in Science and Technology	Science fair and exhibitions	11-Feb	International Day for Women and Girls in Science
	Bringing back out-of-school girls	Department of School Education and Literacy, Ministry of Education	Counselling of Out-of-School Adolescent Girls and their families	Atal Tinkering Lab activities	13-Feb	World Radio Day
	Transition to Higher Education	Department of School Education and Literacy, Ministry of Education	Career counselling activities	Exposure visits to planetarium, museums		
	Life skills	Department of School Education and Literacy, Ministry of Education	Life skill training at school level	Field trips to science colleges, ITIs and Polytechnics		

Months <b>MARCH</b>						
Themes	Gender Equality	Ministerial Convergence	Suggested list of events		Important Dates	
Rationale	International Women's Day		Activity_1	Activity_2	Date	Event
Proposed weekly focus areas	Ending Discrimination	Ministry of Women and Child Development	Nukkad natak, folk media	Miking/ Awareness vans	8 <sup>th</sup> March	International Women Day
	Gender Socialization of adolescents	Ministry of Women and Child Development	Training sessions in schools and Anganwadi Centres	Movie screening at schools		
	Engagement with Men and Boys	Ministry of Women and Child Development	Focused Discussions	Interviews/ Bytes of Celebrity men talking about equality on TV/radio		
	Special Focus on the marginalized women and girls	Ministry of Women and Child Development	Naari ki Chaupal			
Months <b>APRIL</b>						
Themes	Sports and Games	Ministerial Convergence	Suggested list of events		Important Dates	
Rationale	International Day of Sports falls in this month		Activity_1	Activity_2	Date	Event
Proposed weekly focus areas	Ending sports stigma	Department of Sports, Ministry of Youth Affairs and Sports	TV ads	Wall paintings and hoardings	6 <sup>th</sup> April	International Day of Sports for Development and Peace
	Making Girl Teams for all sports	Department of Sports, Ministry of Youth Affairs and Sports	Girls sports teams in all schools for all sports available	Playing motivational bytes from famous women players	7 <sup>th</sup> April	World Health Day
	Beti Bachao Beti Padhao champions and ambassadors	Department of Sports, Ministry of Youth Affairs and Sports	Declaring and promoting district level sports champions	Torch bearer runs	24 <sup>th</sup> April	Panchayati Raj Diwas
	Awareness and Community Mobilization through NSS and NYKS Volunteers	Department of Youth Affairs, Ministry of Youth Affairs and Sports	Sports tournaments (starting from school to state level)	Awareness Drives (Using NSS Cadres)		



Months <b>MAY</b>						
Themes	Ending Child Marriage	Ministerial Convergence	Suggested list of events		Important Dates	
Rationale	Akshay Tritiya falls in or around this month		Activity_1	Activity_2	Date	Event
Proposed weekly focus areas	Child marriage free Gram Panchayats and Urban Local Bodies	Ministry of Women and Child Development	Tracking child marriages	Declaring and incentivizing Child marriage Free Gram Panchayats/ Urban Local Bodies based on the Checklist	1 <sup>st</sup> May	Labour Day
	“Fathers Against Child Marriage”	Ministry of Women and Child Development	Special campaign targeted at bringing together fathers of girl child	Promote Bal Panchayat meets	14 <sup>th</sup> May	Mother’s Day
	Felicitating informants	Ministry of Women and Child Development	Felicitating champions who helped in stopping Child Marriage			
	Simple Marriage and No Dowry	Ministry of Women and Child Development				
Months <b>JUNE</b>						
Themes	Skill Development	Ministerial Convergence	Suggested list of events		Important Dates	
Rationale	To align with Summer break in schools		Activity_1	Activity_2	Date	Event
Proposed weekly focus areas	Financial Literacy	Ministry of Skill Development and Entrepreneurship	Awareness Camps	Training girls to run Jan Sewa Kendras	1 <sup>st</sup> June	Global Day of Parents
	Career Counselling	Ministry of Skill Development and Entrepreneurship	Counselling sessions in schools and skill centres	Celebrating integration of Out-of-School Adolescent Girls into skilling	21 <sup>st</sup> June	International Day of Yoga
	Vocational skills	Ministry of Skill Development and Entrepreneurship	Enrolment drives	Including Yoga in curriculum on life skills		
	Skill development of minority communities	Ministry of Minority Affairs	Job fairs	Supporting and facilitating traditional women artisans to market their handicrafts through Hunar Haat		

Months JULY						
Themes	Digital Literacy and Cyber Security	Ministerial Convergence	Suggested list of events		Important Dates	
Rationale	This theme is crucial for the empowerment of women and girls		Activity_1	Activity_2	Date	Event
Proposed weekly focus areas	Reducing digital gender divide	Ministry of Women and Child Development	Distributing E-learning devices to meritorious students	Increasing bandwidth and internet connections in remote areas	15 <sup>th</sup> July	World Youth Skills Day
	Tips for online safety	Ministry of Women and Child Development	Safety sessions with digital experts in schools	Business women interaction with young girls from Minority communities		
	Digital Skills and Learning	Ministry of Skill Development and Entrepreneurship	YouTube repository on basics of using tech for education and employment			
	Ending digital bullying	Ministry of Women and Child Development	Video series on trolling and digital bullying			
Months AUGUST						
Themes	Sexual and Reproductive Health	Ministerial Convergence	Suggested list of events		Important Dates	
Rationale	This aligns with MoH&FW's Breastfeeding Week		Activity_1	Activity_2	Date	Event
Proposed weekly focus areas	Menstrual Health	Ministry of Health and Family Welfare	Linking and Strengthening Rashtriya Kishor Swasthya Karyakram (RKSK)	Promotion of Ayush Jan Aushadi Kendra	12 <sup>th</sup> August	International Youth Day
	Comprehensive Sexuality Education	Department of School Education and Literacy, Ministry of Education	Special sessions on Comprehensive Sexuality Education with girls and boys	Sessions on dignity and personal well being	29 <sup>th</sup> August	World Sport's Day
	Personal Hygiene and its importance	Ministry of Health and Family Welfare	Open discussions on Ending stigma on Menstruation	School Health Ambassador Initiative		
	Girl-friendly WASH practices	Ministry of Health and Family Welfare	Reviewing and implementing WASH in schools norms from a gender lens			

<b>Months SEPTEMBER</b>						
<b>Themes</b>	<b>Nutrition</b>	<b>Ministerial Convergence</b>	<b>Suggested list of events</b>		<b>Important Dates</b>	
<b>Rationale</b>	<b>To have better convergence with Health Ministry which celebrates September as Nutrition month</b>		<b>Activity_1</b>	<b>Activity_2</b>	<b>Date</b>	<b>Event</b>
<b>Proposed weekly focus areas</b>	Addressing Anaemia in Girls	Ministry of Health and Family Welfare	Health camps on nutrition		1 <sup>st</sup> to 7 <sup>th</sup> Sept	National Nutrition Week
	Eating Right	Ministry of Health and Family Welfare	Balanced diet charts in all Anganwadi Centres, schools, and Primary Health Centres			
	Safe and Dignified Breastfeeding	Ministry of Health and Family Welfare	Creating safe spaces for women in public areas for breastfeeding			
	Local and Indigenous eating habits	Ministry of Health and Family Welfare	Organising food haats with local recipes and dishes	Compiling a coffee table book with indigenous recipes and food practices		
<b>Months OCTOBER</b>						
<b>Themes</b>	<b>Mental and Psychosocial Health</b>	<b>Ministerial Convergence</b>	<b>Suggested list of events</b>		<b>Important Dates</b>	
<b>Rationale</b>	<b>World Mental Health Day</b>		<b>Activity_1</b>	<b>Activity_2</b>	<b>Date</b>	<b>Event</b>
<b>Proposed weekly focus areas</b>	Focus on building Mental Health support ecosystem in Schools	Department of School Education and Literacy, Ministry of Education	Ending stigma around mental health issues	Making short animated videos on mental health	10 <sup>th</sup> October	World Mental Health Day
	Samwaad	Department of School Education and Literacy, Ministry of Education	Group discussion of adolescents on their mental health issues	Protecting boys from norms of toxic masculinity	11 <sup>th</sup> October	International Day of Girl Child
	Peer support groups	Department of School Education and Literacy, Ministry of Education	Establishing safe support groups with similar issues		15 <sup>th</sup> October	International Day of Rural Women
	Emotional needs of adolescents	Department of School Education and Literacy, Ministry of Education	Audio-visual aids and movie screening		16 <sup>th</sup> October	World Food Day



Months <b>NOVEMBER</b>						
Themes	Safety and Security	Ministerial Convergence	Suggested list of events		Important Dates	
Rationale	This aligns with the global 16-day campaign on ending Gender-based violence		Activity_1	Activity_2	Date	Event
Proposed weekly focus areas	Ending Gender based violence	Ministry of Home Affairs	Sensitizing boys and men	Bal Sabhas engagement on safety of girls in villages	14-Nov	Children's Day
	Mahila Police Thanas	Ministry of Home Affairs	Interaction with female police officers to understand	Self-defence trainings	20-Nov	Child Right's Day
	Safe mobility	Ministry of Home Affairs	District and village level assessment of Women Safety	Nehru Yuva Kendra/Bharat Scouts and Guides for awareness and assessment		
	Female only Safe Spaces (One-stop centres)	Ministry of Women and Child Development	Establishing and regular capacitating of one-stop centres in all districts	Having sessions of women/girls only support groups in local community centre at a set date monthly		
Months <b>DECEMBER</b>						
Themes	Know Your Rights (Rights of Girls)	Ministerial Convergence	Suggested list of events		Important Dates	
Rationale	To align with launch date of POSH and POCSO Act		Activity_1	Activity_2	Date	Event
Proposed weekly focus areas	Economic, Social and Political Rights	Ministry of Women and Child Development	Training of girls on their rights in schools and Anganwadi centres	Exposure Visits to Mahila Thanas	5 <sup>th</sup> December	International Volunteer's Day
	Gender equal youth parliaments	Ministry of Women and Child Development	Interaction with People officers and lawyers	Formulation of Bal Sabhas		
			Youth parliaments in Major cities with equal representation from girls			

# Annexure - II. DISTRICT ACTION PLAN

## Format

District Action Plan - Beti Bachao Beti Padhao									
District Level Activities			Implementation Time Frame						
Major Head	Sub Head	Activity	Q1	Q2	Q3	Q4	Total Units	Cost per Unit	Total Cost
Sectoral activities of Women and Child Development (Based on Beti Bachao Beti Padhao Calendar) (50%)	Orientation and Sensitization								
	Outreach								
	Innovation								
	Capacity Building								
	IEC material								
	Monitoring and Documentation								
	Others								
Sectoral activities in Convergence with line Departments and other partners (Based on Beti Bachao Beti Padhao Calendar) (40%)	Inter-Sectoral								
	Education								
	Health and Family Welfare								
	Skill Development								
	Sports and Youth Affairs								
	Minority Affairs								
	Home								
	Panchayati Raj								
	Rural Development								
	Housing and Urban Affairs								
Others									
Flexi Fund (10%)									

# Annexure - III. DISTRICT SCORE CARD

## Sample

Category	Field	Indicator	District Total	Rural	Urban	Data Source	Category	District Rank
Protection	Child Sex Ratio	Sex Ratio at birth for the year						

## Indicators

Category	Field	Indicator
Protection	Child Sex Ratio	Sex Ratio at birth for the year
Survival and Health	Maternal Health	Neonatal Mortality
		Infant Mortality rate
		Percentage of ANC registrations per 1,000 women population in the district (18-49 years age)
		Total % of Pregnant women who had an antenatal check-up in the first trimester
		Total % of Pregnant women who had at least 4 antenatal care visits
	Delivery	Total % of institutional deliveries
	PC&PNDT Act	Number of cases/complaints filed per capita
		No. of PC&PNDT cells established
		Number of inspections done per capita
	S&R Health	No. of awareness sessions on Menstrual Health
Total % of girls reached under Menstrual Health Sessions (11-18 yrs)		
Education	Enrolment of girls	Enrolment ratio of girls in secondary education
		Enrolment ratio of girls in senior secondary
		Enrolment ratio of girls in higher education
	Out-of-school	No. of out-of-school girls re-enrolled to schools
	Toilets	Total % of girls schools with fully functional toilet for girls
Total % of co-ed schools with fully functional toilet for girls		
Development	Skilling	Enrolment of girls in skilling schemes per 1,000 of adolescent girls
		% of enrolled girls certified
	Champions	No. of sportsperson identified as Beti Bachao Beti Padhao champions
Institutional Mechanisms	District Committee Meetings	No. of District Committee meetings held
	Cross learning	No. of inter-district exposure visits done by district officials
		No. of inter-state exposure visits done by state officials
	Bal Sabhas	No. of Bal Sabhas created
		No. of Bal Sabhas meetings done



Category	Field	Indicator
Capacity Building	Women Groups Trained	No. of Beti Bachao Beti Padhao Trainings held for SHG/Mahila Mandals
		Total no. of SHG/Mahila Mandals trained under Beti Bachao Beti Padhao
	Youth Groups Trained	No. of Beti Bachao Beti Padhao Trainings held for NYKS and Youth Volunteers
		Total no. of NYKS and Youth Volunteers trained under Beti Bachao Beti Padhao
	Frontline workers trained	No. of Beti Bachao Beti Padhao Trainings held for Frontline workers-AWWS/ASHAs
		Total no. of frontline workers trained under Beti Bachao Beti Padhao
	Health Officials Trained	No. of PC&PNDT Trainings held for health officials
		No. of health officials trained
	Social Influencers trained	Total no. of Religious and Faith leaders trained/sensitized under Beti Bachao Beti Padhao
		Total no. of Elected Representatives trained under Beti Bachao Beti Padhao
	Event celebrations	No. of Celebration of Girl Child Day organised
		No. of Celebration of Beti Janmahotsava organised
	Social mobilization	No. of Nari chaupals organised
		No. of Mahila Sabha formed
		No. of special Gram Sabha organised
No. of Plantation drives		



# Annexure - IV. BEST PRACTICES TEMPLATE

## Structure of the Document

### Introduction

- ⊙ Scheme Implementation and History in the state
- ⊙ Overall Beti Bachao Beti Padhao Approach of State
- ⊙ Key highlights of Beti Bachao Beti Padhao in the state
- ⊙ Any state level activity to be highlighted
- ⊙ Impact of Beti Bachao Beti Padhao in the state
  - » SRB
  - » Percentage of Institutional Deliveries
  - » 1st Trimester ANC Registration
  - » Skilling of Girls
- ⊙ Way Forward

### Beti Bachao Beti Padhao Best Practices

- ⊙ List of Innovations and Initiatives
  - » At state or district level
  - » Separate Page for each best practice

### Format for Best Practices

- ⊙ Title of Innovative Programme
- ⊙ Geographical Cover/District(s)
- ⊙ Timeline
  - » Date or Time Period of Programme
- ⊙ Details of Programme
  - » What was done?
  - » Problem statement that was tackled
  - » How was it unique?
  - » Who did it?
  - » How many participated?
  - » What was the outcome and the impact?
  - » Any other notable point
- ⊙ Pictures of the Event
  - » 4-5 clear and good quality pictures of the programme
  - » Not pixelated
- ⊙ Point of Contact
  - » Person to be contacted to get more details of the action
- ⊙ Links of Media Coverage (if any)
  - » Print (Clearly visible and legible picture of the news piece)
  - » E-news (Web link and screenshot of the news)
  - » Others (Social media coverage or tweets by prominent)
- ⊙ Direct Quotes (if any)
  - » From Participants, stakeholders, or beneficiaries

# Annexure - V. LIST OF THE DISTRICTS ALONG WITH THEIR ALLOCATION

## LIST OF DISTRICTS HAVING SRB LESS THAN OR EQUAL TO 918 WITH ALLOCATION @ ₹40 LAKH/YEAR

S No.	States/UT	Districts	Sex Ratio at Birth (SRB) 2020-21 as per HMIS
1.	Arunachal Pradesh	Dibang Valley	700
2.	Arunachal Pradesh	Siang	721
3.	Arunachal Pradesh	Tawang	769
4.	Arunachal Pradesh	Leparada	824
5.	Arunachal Pradesh	Lower Dibang Valley	838
6.	Arunachal Pradesh	West Kameng	859
7.	Arunachal Pradesh	Lower Siang	864
8.	Arunachal Pradesh	Kurung Kumey	878
9.	Arunachal Pradesh	Upper Subansiri	886
10.	Arunachal Pradesh	Lohit	889
11.	Arunachal Pradesh	Namsai	891
12.	Arunachal Pradesh	East Siang	903
13.	Assam	Majuli	873
14.	Assam	Kamrup Metro	897
15.	Assam	Nalbari	898
16.	Bihar	Saran	856
17.	Bihar	Vaishali	857
18.	Bihar	Madhubani	857
19.	Bihar	Bhojpur	859
20.	Bihar	Arwal	884
21.	Bihar	Rohtas	886
22.	Bihar	Muzaffarpur	890
23.	Bihar	Darbhanga	892
24.	Bihar	Sitamarhi	893
25.	Bihar	Gaya	893
26.	Bihar	Jamui	900
27.	Bihar	Lakhisarai	900
28.	Bihar	Patna	902
29.	Bihar	Nawada	902
30.	Bihar	Buxar	905

S No.	States/UT	Districts	Sex Ratio at Birth (SRB) 2020-21 as per HMIS
31.	Bihar	Samastipur	905
32.	Bihar	Nalanda	906
33.	Bihar	Sheikhpura	913
34.	Bihar	Aurangabad	913
35.	Bihar	Siwan	917
36.	Delhi	East	897
37.	Delhi	South West	901
38.	Gujarat	Sabar Kantha	868
39.	Gujarat	Amreli	877
40.	Gujarat	Ahmadabad	880
41.	Gujarat	Botad	889
42.	Gujarat	Mahesana	893
43.	Gujarat	Anand	897
44.	Gujarat	Rajkot	900
45.	Gujarat	Bhavnagar	907
46.	Gujarat	Surat	907
47.	Gujarat	Junagadh	916
48.	Gujarat	Gir Somnath	916
49.	Haryana	Jhajjar	881
50.	Haryana	Faridabad	896
51.	Haryana	Rohtak	901
52.	Haryana	Kaithal	908
53.	Haryana	Ambala	908
54.	Haryana	Karnal	908
55.	Haryana	Sonipat	912
56.	Haryana	Jind	912
57.	Haryana	Charki Dadri	914
58.	Himachal Pradesh	Hamirpur	916
59.	Jammu and Kashmir	Shopian	847
60.	Jammu and Kashmir	Samba	874
61.	Jammu and Kashmir	Udhampur	875
62.	Jammu and Kashmir	Bandipora	892
63.	Jammu and Kashmir	Ganderbal	894
64.	Jammu and Kashmir	Reasi	905
65.	Jammu and Kashmir	Jammu	907



S No.	States/UT	Districts	Sex Ratio at Birth (SRB) 2020-21 as per HMIS
66.	Jammu and Kashmir	Doda	908
67.	Jammu and Kashmir	Rajouri	912
68.	Jharkhand	Koderma	851
69.	Jharkhand	Deoghar	879
70.	Jharkhand	Hazaribagh	892
71.	Jharkhand	Giridih	894
72.	Jharkhand	Ramgarh	900
73.	Jharkhand	Dhanbad	917
74.	Karnataka	Mandya	884
75.	Karnataka	Kolar	907
76.	Karnataka	Ramanagara	912
77.	Karnataka	Chikkaballapura	918
78.	Madhya Pradesh	Datia	877
79.	Madhya Pradesh	Harda	878
80.	Madhya Pradesh	Morena	886
81.	Madhya Pradesh	Gwalior	898
82.	Madhya Pradesh	Agar Malwa	898
83.	Madhya Pradesh	Sheopur	910
84.	Madhya Pradesh	Ashoknagar	914
85.	Maharashtra	Sangli	881
86.	Maharashtra	Hingoli	904
87.	Maharashtra	Buldhana	908
88.	Maharashtra	Kolhapur	908
89.	Maharashtra	Jalgaon	909
90.	Maharashtra	Ahmednagar	914
91.	Maharashtra	Osmanabad	915
92.	Manipur	Noney	844
93.	Manipur	Tengnoupal	878
94.	Manipur	Chandel	900
95.	Meghalaya	South Garo Hills	897
96.	Meghalaya	East Garo Hills	900
97.	Meghalaya	Ri Bhoi	903
98.	Meghalaya	South West Garo Hills	918
99.	Mizoram	Hnahthial	859
100.	Nagaland	Kiphire	798

S No.	States/UT	Districts	Sex Ratio at Birth (SRB) 2020-21 as per HMIS
101.	Nagaland	Peren	828
102.	Nagaland	Tuensang	828
103.	Nagaland	Wokha	842
104.	Nagaland	Kohima	849
105.	Nagaland	Mokokchung	877
106.	Nagaland	Mon	909
107.	Odisha	Nayagarh	826
108.	Odisha	Cuttack	879
109.	Odisha	Sonepur	898
110.	Odisha	Ganjam	913
111.	Odisha	Anugul	916
112.	Odisha	Malkangiri	918
113.	Puducherry	Karaikal	898
114.	Punjab	Fazilka	895
115.	Punjab	Tarn Taran	904
116.	Punjab	Sangrur	905
117.	Punjab	Shahid Bhagat Singh Nagar	908
118.	Punjab	Jalandhar	910
119.	Punjab	Fatehgarh Sahib	912
120.	Punjab	Bathinda	913
121.	Punjab	Ferozepur	914
122.	Punjab	Pathankot	916
123.	Rajasthan	Sirohi	914
124.	Rajasthan	Sawai Madhopur	915
125.	Sikkim	North District	844
126.	Tamil Nadu	Ranipet	901
127.	Tamil Nadu	Salem	902
128.	Tamil Nadu	Tiruvannamalai	916
129.	Tamil Nadu	Kallakurichi	917
130.	Tamil Nadu	Sivaganga	917
131.	Tamil Nadu	Karur	918
132.	Telangana	Suryapet	808
133.	Telangana	Jangoan	876
134.	Telangana	Medchal Malkajgiri	885
135.	Telangana	Kamareddy	887

S No.	States/UT	Districts	Sex Ratio at Birth (SRB) 2020-21 as per HMIS
136.	Telangana	Jayashankar Bhupalapally	892
137.	Telangana	Nagarkurnool	892
138.	Telangana	Sangareddy	893
139.	Telangana	Kumuram Bheem Asifabad	899
140.	Telangana	Rajanna Sircilla	911
141.	Telangana	Yadadri Bhuvanagiri	914
142.	Telangana	Mancherial	914
143.	Telangana	Warangal Urban	917
144.	The Dadra and Nagar Haveli and Daman and Diu	Diu	820
145.	The Dadra and Nagar Haveli and Daman and Diu	Daman	881
146.	The Dadra and Nagar Haveli and Daman and Diu	Dadra and Nagar Haveli	890
147.	Tripura	West Tripura	906
148.	Uttar Pradesh	Hamirpur	871
149.	Uttar Pradesh	Bhadohi	875
150.	Uttar Pradesh	Aligarh	890
151.	Uttar Pradesh	Ghazipur	896
152.	Uttar Pradesh	Mathura	899
153.	Uttar Pradesh	Farrukhabad	900
154.	Uttar Pradesh	Gautam Buddha Nagar	901
155.	Uttar Pradesh	Firozabad	903
156.	Uttar Pradesh	Gorakhpur	904
157.	Uttar Pradesh	Sitapur	904
158.	Uttar Pradesh	Amroha	908
159.	Uttar Pradesh	Prayagraj	908
160.	Uttar Pradesh	Hardoi	911
161.	Uttar Pradesh	Hapur	915
162.	Uttar Pradesh	Fatehpur	918
163.	Uttar Pradesh	Mainpuri	918
164.	Uttarakhand	Rudra Prayag	871
165.	Uttarakhand	Pauri Garhwal	885
166.	Uttarakhand	Champawat	888
167.	Uttarakhand	Bageshwar	904
168.	Uttarakhand	Nainital	918
169.	West Bengal	Alipurduar	918

**LIST OF DISTRICTS HAVING SRB MORE THAN 918 AND LESS THAN OR EQUAL TO 952 WITH ALLOCATION @ ₹30 LAKH/YEAR**

S No.	States/UT	Districts	Sex Ratio at Birth (SRB) 2020-21 as per HMIS
1.	Andaman and Nicobar Islands	Nicobars	942
2.	Andhra Pradesh	Kurnool	922
3.	Andhra Pradesh	Srikakulam	925
4.	Andhra Pradesh	SPSR Nellore	931
5.	Andhra Pradesh	Vizianagaram	933
6.	Andhra Pradesh	Y.S.R.	939
7.	Andhra Pradesh	Anantapur	942
8.	Andhra Pradesh	Chittoor	948
9.	Andhra Pradesh	Visakhapatnam	949
10.	Arunachal Pradesh	Tirap	923
11.	Arunachal Pradesh	Papum Pare	923
12.	Arunachal Pradesh	Upper Siang	930
13.	Assam	South Salmara Mankachar	922
14.	Assam	Dibrugarh	923
15.	Assam	Kokrajhar	929
16.	Assam	Karbi Anglong	931
17.	Assam	Barpeta	932
18.	Assam	Dhubri	933
19.	Assam	Sivasagar	937
20.	Assam	Dima Hasao	939
21.	Assam	Kamrup	939
22.	Assam	Goalpara	940
23.	Assam	Tinsukia	940
24.	Assam	Baksa	942
25.	Assam	Udalguri	944
26.	Assam	Marigaon	945
27.	Assam	Sonitpur	947
28.	Assam	Lakhimpur	948
29.	Assam	Karimganj	949
30.	Assam	Golaghat	950



S No.	States/UT	Districts	Sex Ratio at Birth (SRB) 2020-21 as per HMIS
31.	Assam	Biswanath	951
32.	Bihar	Kishanganj	920
33.	Bihar	Sheohar	922
34.	Bihar	Banka	923
35.	Bihar	Pashchim Champaran	923
36.	Bihar	Jehanabad	924
37.	Bihar	Begusarai	927
38.	Bihar	Gopalganj	932
39.	Bihar	Bhagalpur	932
40.	Bihar	Khagaria	932
41.	Bihar	Munger	942
42.	Bihar	Araria	943
43.	Bihar	Kaimur (Bhabua)	944
44.	Bihar	Purbi Champaran	948
45.	Chandigarh	Chandigarh	941
46.	Chhattisgarh	Narayanpur	920
47.	Chhattisgarh	Surguja	927
48.	Chhattisgarh	Bemetara	933
49.	Chhattisgarh	Raigarh	934
50.	Chhattisgarh	Jashpur	935
51.	Chhattisgarh	Surajpur	940
52.	Chhattisgarh	Baloda Bazar	943
53.	Chhattisgarh	Kanker	944
54.	Chhattisgarh	Durg	946
55.	Chhattisgarh	Korba	950
56.	Delhi	North East	921
57.	Delhi	North West	921
58.	Delhi	Shahdara	921
59.	Delhi	South	925
60.	Delhi	Central	935
61.	Delhi	South East	939
62.	Delhi	West	939

S No.	States/UT	Districts	Sex Ratio at Birth (SRB) 2020-21 as per HMIS
63.	Delhi	New Delhi	944
64.	Goa	South Goa	946
65.	Goa	North Goa	952
66.	Gujarat	Mahisagar	919
67.	Gujarat	Panch Mahals	921
68.	Gujarat	Gandhinagar	921
69.	Gujarat	Bharuch	922
70.	Gujarat	Dang	924
71.	Gujarat	Vadodara	925
72.	Gujarat	Valsad	927
73.	Gujarat	Patan	930
74.	Gujarat	Narmada	931
75.	Gujarat	Navsari	934
76.	Gujarat	Chhotaudepur	935
77.	Gujarat	Surendranagar	938
78.	Gujarat	Porbandar	938
79.	Gujarat	Dohad	940
80.	Gujarat	Arvalli	943
81.	Gujarat	Devbhumi Dwarka	943
82.	Gujarat	Tapi	945
83.	Gujarat	Banas Kantha	952
84.	Haryana	Hisar	920
85.	Haryana	Rewari	921
86.	Haryana	Yamunanagar	923
87.	Haryana	Bhiwani	924
88.	Haryana	Kurukshetra	925
89.	Haryana	Mahendragarh	927
90.	Haryana	Sirsa	930
91.	Haryana	Panipat	946
92.	Haryana	Panchkula	948
93.	Haryana	Gurugram	951
94.	Himachal Pradesh	Kangra	919

S No.	States/UT	Districts	Sex Ratio at Birth (SRB) 2020-21 as per HMIS
95.	Himachal Pradesh	Chamba	924
96.	Himachal Pradesh	Sirmaur	934
97.	Himachal Pradesh	Mandi	939
98.	Himachal Pradesh	Kinnaur	945
99.	Jammu and Kashmir	Kathua	922
100.	Jammu and Kashmir	Srinagar	933
101.	Jammu and Kashmir	Ramban	936
102.	Jharkhand	Chatra	925
103.	Jharkhand	Palamu	927
104.	Jharkhand	Bokaro	932
105.	Jharkhand	Ranchi	937
106.	Jharkhand	Garhwa	940
107.	Jharkhand	Latehar	941
108.	Jharkhand	Godda	942
109.	Jharkhand	Gumla	947
110.	Karnataka	Chamarajanagara	928
111.	Karnataka	Bidar	937
112.	Karnataka	Koppal	939
113.	Karnataka	Belagavi	939
114.	Karnataka	Yadgir	940
115.	Karnataka	Mysuru	943
116.	Karnataka	Chikkamagaluru	943
117.	Karnataka	Bengaluru Rural	946
118.	Karnataka	Udupi	947
119.	Karnataka	Haveri	947
120.	Karnataka	Vijayapura	948
121.	Karnataka	Chitradurga	948
122.	Karnataka	Shivamogga	949
123.	Karnataka	Ballari	950
124.	Karnataka	Uttara Kannada	951
125.	Karnataka	Bengaluru Urban	952
126.	Kerala	Alappuzha	932

S No.	States/UT	Districts	Sex Ratio at Birth (SRB) 2020-21 as per HMIS
127.	Kerala	Kasaragod	933
128.	Kerala	Kannur	947
129.	Kerala	Kozhikode	947
130.	Kerala	Pathanamthitta	952
131.	Lakshadweep	Lakshadweep District	948
132.	Madhya Pradesh	Bhind	919
133.	Madhya Pradesh	Hoshangabad	922
134.	Madhya Pradesh	Umariya	922
135.	Madhya Pradesh	Chhatarpur	923
136.	Madhya Pradesh	Sidhi	923
137.	Madhya Pradesh	Tikamgarh	924
138.	Madhya Pradesh	Burhanpur	925
139.	Madhya Pradesh	Narsinghpur	925
140.	Madhya Pradesh	Satna	926
141.	Madhya Pradesh	Panna	930
142.	Madhya Pradesh	Barwani	932
143.	Madhya Pradesh	Guna	932
144.	Madhya Pradesh	Jabalpur	934
145.	Madhya Pradesh	Mandsaur	937
146.	Madhya Pradesh	Katni	937
147.	Madhya Pradesh	Neemuch	938
148.	Madhya Pradesh	Rewa	938
149.	Madhya Pradesh	Khargone	939
150.	Madhya Pradesh	Shajapur	939
151.	Madhya Pradesh	Mandla	939
152.	Madhya Pradesh	Khandwa	939
153.	Madhya Pradesh	Bhopal	940
154.	Madhya Pradesh	Shahdol	941
155.	Madhya Pradesh	Shivpuri	944
156.	Madhya Pradesh	Vidisha	945
157.	Madhya Pradesh	Alirajpur	950
158.	Madhya Pradesh	Sagar	950



S No.	States/UT	Districts	Sex Ratio at Birth (SRB) 2020-21 as per HMIS
159.	Madhya Pradesh	Ratlam	950
160.	Madhya Pradesh	Dhar	950
161.	Madhya Pradesh	Singrauli	951
162.	Madhya Pradesh	Seoni	952
163.	Madhya Pradesh	Jhabua	952
164.	Madhya Pradesh	Raisen	952
165.	Maharashtra	Sindhudurg	921
166.	Maharashtra	Wardha	922
167.	Maharashtra	Latur	924
168.	Maharashtra	Nashik	927
169.	Maharashtra	Chandrapur	927
170.	Maharashtra	Bhandara	927
171.	Maharashtra	Beed	928
172.	Maharashtra	Pune	928
173.	Maharashtra	Jalna	928
174.	Maharashtra	Akola	931
175.	Maharashtra	Gadchiroli	933
176.	Maharashtra	Solapur	939
177.	Maharashtra	Mumbai	939
178.	Maharashtra	Dhule	939
179.	Maharashtra	Satara	942
180.	Maharashtra	Washim	945
181.	Maharashtra	Palghar	947
182.	Maharashtra	Parbhani	948
183.	Maharashtra	Gondia	951
184.	Maharashtra	Nandurbar	952
185.	Manipur	Imphal East	932
186.	Manipur	Kakching	933
187.	Manipur	Imphal West	936
188.	Manipur	Pherzawl	941
189.	Manipur	Tamenglong	946
190.	Meghalaya	North Garo Hills	931

S No.	States/UT	Districts	Sex Ratio at Birth (SRB) 2020-21 as per HMIS
191.	Meghalaya	West Garo Hills	937
192.	Mizoram	Khawzawl	924
193.	Mizoram	Lawngtlai	936
194.	Mizoram	Aizawl	940
195.	Mizoram	Lunglei	945
196.	Nagaland	Dimapur	920
197.	Nagaland	Zunheboto	951
198.	Odisha	Khordha	919
199.	Odisha	Dhenkanal	926
200.	Odisha	Bhadrak	927
201.	Odisha	Bargarh	931
202.	Odisha	Jajapur	931
203.	Odisha	Sambalpur	931
204.	Odisha	Jagatsinghapur	933
205.	Odisha	Balangir	934
206.	Odisha	Kendrapara	934
207.	Odisha	Kendujhar	940
208.	Odisha	Kandhamal	945
209.	Odisha	Boudh	950
210.	Odisha	Kalahandi	950
211.	Odisha	Koraput	951
212.	Puducherry	Mahe	941
213.	Punjab	Gurdaspur	921
214.	Punjab	Faridkot	926
215.	Punjab	Kapurthala	928
216.	Punjab	Patiala	929
217.	Punjab	Hoshiarpur	929
218.	Punjab	S.A.S Nagar	931
219.	Punjab	Mansa	932
220.	Punjab	Sri Muktsar Sahib	933
221.	Punjab	Ludhiana	934
222.	Punjab	Amritsar	950

S No.	States/UT	Districts	Sex Ratio at Birth (SRB) 2020-21 as per HMIS
223.	Rajasthan	Dausa	922
224.	Rajasthan	Tonk	922
225.	Rajasthan	Kota	923
226.	Rajasthan	Jhalawar	924
227.	Rajasthan	Jaipur	926
228.	Rajasthan	Chittorgarh	927
229.	Rajasthan	Ganganagar	928
230.	Rajasthan	Pali	933
231.	Rajasthan	Alwar	933
232.	Rajasthan	Dungarpur	936
233.	Rajasthan	Dholpur	937
234.	Rajasthan	Bhilwara	937
235.	Rajasthan	Karauli	937
236.	Rajasthan	Bundi	938
237.	Rajasthan	Rajsamand	943
238.	Rajasthan	Bharatpur	943
239.	Rajasthan	Sikar	946
240.	Rajasthan	Baran	949
241.	Rajasthan	Pratapgarh	951
242.	Rajasthan	Ajmer	952
243.	Sikkim	East District	920
244.	Sikkim	South District	945
245.	Tamil Nadu	Perambalur	920
246.	Tamil Nadu	Ramanathapuram	927
247.	Tamil Nadu	Dindigul	927
248.	Tamil Nadu	Namakkal	929
249.	Tamil Nadu	Pudukkottai	930
250.	Tamil Nadu	Dharmapuri	932
251.	Tamil Nadu	Tiruchirappalli	933
252.	Tamil Nadu	Kanniyakumari	934
253.	Tamil Nadu	Ariyalur	937
254.	Tamil Nadu	Kanchipuram	939

S No.	States/UT	Districts	Sex Ratio at Birth (SRB) 2020-21 as per HMIS
255.	Tamil Nadu	Thoothukkudi	940
256.	Tamil Nadu	The Nilgiris	943
257.	Tamil Nadu	Tirupathur	946
258.	Tamil Nadu	Krishnagiri	948
259.	Tamil Nadu	Tiruppur	950
260.	Tamil Nadu	Thanjavur	950
261.	Tamil Nadu	Madurai	951
262.	Tamil Nadu	Tirunelveli	952
263.	Telangana	Wanaparthy	925
264.	Telangana	Khammam	928
265.	Telangana	Warangal Rural	932
266.	Telangana	Mahabubnagar	935
267.	Telangana	Karimnagar	938
268.	Telangana	Narayanpet	941
269.	Telangana	Hyderabad	945
270.	Telangana	Mahabubabad	945
271.	Telangana	Nalgonda	946
272.	Telangana	Vikarabad	950
273.	Telangana	Siddipet	950
274.	Telangana	Peddapalli	951
275.	Telangana	Bhadradri Kothagudem	951
276.	Telangana	Ranga Reddy	951
277.	Tripura	Khowai	934
278.	Tripura	North Tripura	939
279.	Uttar Pradesh	Lucknow	920
280.	Uttar Pradesh	Kheri	921
281.	Uttar Pradesh	Baghpat	921
282.	Uttar Pradesh	Kanpur Dehat	923
283.	Uttar Pradesh	Varanasi	924
284.	Uttar Pradesh	Agra	925
285.	Uttar Pradesh	Kannauj	925



S No.	States/UT	Districts	Sex Ratio at Birth (SRB) 2020-21 as per HMIS
286.	Uttar Pradesh	Bijnor	925
287.	Uttar Pradesh	Ballia	926
288.	Uttar Pradesh	Muzaffarnagar	926
289.	Uttar Pradesh	Ambedkar Nagar	926
290.	Uttar Pradesh	Chandauli	926
291.	Uttar Pradesh	Amethi	926
292.	Uttar Pradesh	Barabanki	927
293.	Uttar Pradesh	Jalaun	927
294.	Uttar Pradesh	Chitrakoot	927
295.	Uttar Pradesh	Auraiya	928
296.	Uttar Pradesh	Mau	929
297.	Uttar Pradesh	Kaushambi	930
298.	Uttar Pradesh	Pilibhit	930
299.	Uttar Pradesh	Maharajganj	932
300.	Uttar Pradesh	Pratapgarh	932
301.	Uttar Pradesh	Budaun	933
302.	Uttar Pradesh	Gonda	933
303.	Uttar Pradesh	Hathras	933
304.	Uttar Pradesh	Shamli	934
305.	Uttar Pradesh	Kasganj	934
306.	Uttar Pradesh	Unnao	934
307.	Uttar Pradesh	Sambhal	937
308.	Uttar Pradesh	Etah	937
309.	Uttar Pradesh	Deoria	938
310.	Uttar Pradesh	Siddharth Nagar	939
311.	Uttar Pradesh	Banda	940
312.	Uttar Pradesh	Balrampur	941
313.	Uttar Pradesh	Shravasti	942
314.	Uttar Pradesh	Lalitpur	943
315.	Uttar Pradesh	Mirzapur	943
316.	Uttar Pradesh	Saharanpur	943

S No.	States/UT	Districts	Sex Ratio at Birth (SRB) 2020-21 as per HMIS
317.	Uttar Pradesh	Ghaziabad	944
318.	Uttar Pradesh	Rae Bareli	945
319.	Uttar Pradesh	Bareilly	945
320.	Uttar Pradesh	Azamgarh	945
321.	Uttar Pradesh	Basti	947
322.	Uttar Pradesh	Kushi Nagar	948
323.	Uttar Pradesh	Sonbhadra	948
324.	Uttar Pradesh	Etawah	949
325.	Uttar Pradesh	Sultanpur	952
326.	Uttarakhand	Chamoli	922
327.	Uttarakhand	Tehri Garhwal	945
328.	Uttarakhand	Almora	946
329.	Uttarakhand	Haridwar	947
330.	Uttarakhand	Uttar Kashi	947
331.	Uttarakhand	Udam Singh Nagar	948
332.	Uttarakhand	Pithoragarh	948
333.	West Bengal	Purulia	921
334.	West Bengal	Jhargram	926
335.	West Bengal	Medinipur East	934
336.	West Bengal	Kalimpong	935
337.	West Bengal	Paschim Bardhaman	935
338.	West Bengal	Purba Bardhaman	937
339.	West Bengal	Murshidabad	946
340.	West Bengal	Kolkata	948
341.	West Bengal	24 Paraganas North	949
342.	West Bengal	Maldah	949
343.	West Bengal	Dinajpur Uttar	949
344.	West Bengal	Jalpaiguri	950
345.	West Bengal	Coochbehar	951
346.	West Bengal	Birbhum	951
347.	West Bengal	Darjeeling	952

**LIST OF DISTRICTS HAVING SRB MORE THAN 952 WITH ALLOCATION @ ₹20 LAKH/YEAR**

S No.	States/UT	Districts	Sex Ratio at Birth (SRB) 2020-21 as per HMIS
1.	Andaman and Nicobar Islands	South Andamans	958
2.	Andaman and Nicobar Islands	North and Middle Andaman	985
3.	Andhra Pradesh	Prakasam	963
4.	Andhra Pradesh	Krishna	970
5.	Andhra Pradesh	East Godavari	973
6.	Andhra Pradesh	West Godavari	979
7.	Andhra Pradesh	Guntur	988
8.	Arunachal Pradesh	Kra Daadi	959
9.	Arunachal Pradesh	Shi Yomi	964
10.	Arunachal Pradesh	Changlang	975
11.	Arunachal Pradesh	West Siang	989
12.	Arunachal Pradesh	Longding	996
13.	Arunachal Pradesh	Kamle	1000
14.	Arunachal Pradesh	Pakke Kessang	1000
15.	Arunachal Pradesh	Lower Subansiri	1044
16.	Arunachal Pradesh	East Kameng	1378
17.	Arunachal Pradesh	Anjaw	1512
18.	Assam	Dhemaji	953
19.	Assam	Darrang	955
20.	Assam	Jorhat	956
21.	Assam	Hojai	958
22.	Assam	Nagaon	960
23.	Assam	Chirang	968
24.	Assam	Cachar	970
25.	Assam	Bongaigaon	973
26.	Assam	West Karbi Anglong	976
27.	Assam	Hailakandi	984
28.	Assam	Charaideo	992
29.	Bihar	Saharsa	955
30.	Bihar	Supaul	962

S No.	States/UT	Districts	Sex Ratio at Birth (SRB) 2020-21 as per HMIS
31.	Bihar	Katihar	962
32.	Bihar	Madhepura	966
33.	Bihar	Purnia	967
34.	Chhattisgarh	Mahasamund	954
35.	Chhattisgarh	Janjgir-Champa	956
36.	Chhattisgarh	Balod	956
37.	Chhattisgarh	Bilaspur	960
38.	Chhattisgarh	Gariyaband	961
39.	Chhattisgarh	Korea	966
40.	Chhattisgarh	Dhamtari	968
41.	Chhattisgarh	Gaurella Pendra Marwahi	974
42.	Chhattisgarh	Balrampur	975
43.	Chhattisgarh	Mungeli	978
44.	Chhattisgarh	Raipur	980
45.	Chhattisgarh	Bastar	983
46.	Chhattisgarh	Kabirdham	984
47.	Chhattisgarh	Bijapur	985
48.	Chhattisgarh	Kondagaon	985
49.	Chhattisgarh	Rajnandgaon	990
50.	Chhattisgarh	Sukma	994
51.	Chhattisgarh	Dantewada	1038
52.	Delhi	North	967
53.	Gujarat	Kachchh	957
54.	Gujarat	Kheda	957
55.	Gujarat	Jamnagar	960
56.	Gujarat	Morbi	978
57.	Haryana	Palwal	961
58.	Haryana	Fatehabad	964
59.	Haryana	Nuh	964
60.	Himachal Pradesh	Bilaspur	957
61.	Himachal Pradesh	Kullu	964
62.	Himachal Pradesh	Solan	964

S No.	States/UT	Districts	Sex Ratio at Birth (SRB) 2020-21 as per HMIS
63.	Himachal Pradesh	Shimla	971
64.	Himachal Pradesh	Una	978
65.	Himachal Pradesh	Lahul and Spiti	1294
66.	Jammu and Kashmir	Kupwara	956
67.	Jammu and Kashmir	Poonch	958
68.	Jammu and Kashmir	Kishtwar	965
69.	Jammu and Kashmir	Anantnag	967
70.	Jammu and Kashmir	Pulwama	970
71.	Jammu and Kashmir	Baramulla	973
72.	Jammu and Kashmir	Kulgam	985
73.	Jammu and Kashmir	Budgam	1031
74.	Jharkhand	Dumka	954
75.	Jharkhand	Simdega	956
76.	Jharkhand	Sahebganj	959
77.	Jharkhand	Jamtara	968
78.	Jharkhand	Pakur	969
79.	Jharkhand	Saraikela Kharsawan	972
80.	Jharkhand	West Singhbhum	973
81.	Jharkhand	Khunti	989
82.	Jharkhand	East Singhbhum	990
83.	Jharkhand	Lohardaga	992
84.	Karnataka	Hassan	955
85.	Karnataka	Tumakuru	956
86.	Karnataka	Bagalkote	958
87.	Karnataka	Kalaburagi	961
88.	Karnataka	Dharwad	961
89.	Karnataka	Davangere	961
90.	Karnataka	Kodagu	962
91.	Karnataka	Raichur	976
92.	Karnataka	Gadag	988
93.	Karnataka	Dakshina Kannada	997
94.	Kerala	Thrissur	955



S No.	States/UT	Districts	Sex Ratio at Birth (SRB) 2020-21 as per HMIS
95.	Kerala	Thiruvananthapuram	957
96.	Kerala	Idukki	960
97.	Kerala	Kollam	962
98.	Kerala	Palakkad	964
99.	Kerala	Kottayam	964
100.	Kerala	Ernakulam	967
101.	Kerala	Malappuram	971
102.	Kerala	Wayanad	985
103.	Ladakh	Leh Ladakh	959
104.	Ladakh	Kargil	984
105.	Madhya Pradesh	Ujjain	954
106.	Madhya Pradesh	Damoh	954
107.	Madhya Pradesh	Chhindwara	959
108.	Madhya Pradesh	Niwari	961
109.	Madhya Pradesh	Sehore	962
110.	Madhya Pradesh	Betul	966
111.	Madhya Pradesh	Dewas	967
112.	Madhya Pradesh	Rajgarh	971
113.	Madhya Pradesh	Indore	973
114.	Madhya Pradesh	Dindori	974
115.	Madhya Pradesh	Balaghat	979
116.	Madhya Pradesh	Anuppur	984
117.	Maharashtra	Aurangabad	954
118.	Maharashtra	Mumbai Suburban	954
119.	Maharashtra	Ratnagiri	957
120.	Maharashtra	Thane	964
121.	Maharashtra	Amravati	971
122.	Maharashtra	Yavatmal	976
123.	Maharashtra	Raigad	977
124.	Maharashtra	Nagpur	983
125.	Maharashtra	Nanded	1000
126.	Manipur	Thoubal	960

S No.	States/UT	Districts	Sex Ratio at Birth (SRB) 2020-21 as per HMIS
127.	Manipur	Churachandpur	967
128.	Manipur	Kangpokpi	973
129.	Manipur	Senapati	1002
130.	Manipur	Ukhrul	1013
131.	Manipur	Bishnupur	1068
132.	Manipur	Kamjong	1075
133.	Manipur	Jiribam	1111
134.	Meghalaya	East Khasi Hills	955
135.	Meghalaya	West Jaintia Hills	955
136.	Meghalaya	West Khasi Hills	958
137.	Meghalaya	South West Khasi Hills	983
138.	Meghalaya	East Jaintia Hills	988
139.	Mizoram	Saitual	957
140.	Mizoram	Champhai	981
141.	Mizoram	Saiha	991
142.	Mizoram	Serchhip	1011
143.	Mizoram	Kolasib	1045
144.	Mizoram	Mamit	1054
145.	Nagaland	Phek	972
146.	Nagaland	Longleng	1141
147.	Odisha	Baleshwar	953
148.	Odisha	Nabarangpur	957
149.	Odisha	Deogarh	958
150.	Odisha	Puri	959
151.	Odisha	Gajapati	962
152.	Odisha	Mayurbhanj	970
153.	Odisha	Rayagada	970
154.	Odisha	Nuapada	972
155.	Odisha	Sundargarh	982
156.	Odisha	Jharsuguda	998
157.	Puducherry	Yanam	989
158.	Puducherry	Pondicherry	996

S No.	States/UT	Districts	Sex Ratio at Birth (SRB) 2020-21 as per HMIS
159.	Punjab	Rupnagar	954
160.	Punjab	Barnala	965
161.	Punjab	Moga	965
162.	Rajasthan	Churu	953
163.	Rajasthan	Nagaur	954
164.	Rajasthan	Jodhpur	962
165.	Rajasthan	Banswara	965
166.	Rajasthan	Jalore	967
167.	Rajasthan	Udaipur	967
168.	Rajasthan	Bikaner	970
169.	Rajasthan	Jaisalmer	971
170.	Rajasthan	Hanumangarh	974
171.	Rajasthan	Jhunjhunu	982
172.	Rajasthan	Barmer	989
173.	Sikkim	West District	963
174.	Tamil Nadu	Villupuram	953
175.	Tamil Nadu	Vellore	956
176.	Tamil Nadu	Thiruvarur	956
177.	Tamil Nadu	Thiruvallur	962
178.	Tamil Nadu	Cuddalore	962
179.	Tamil Nadu	Chengalpattu	966
180.	Tamil Nadu	Coimbatore	974
181.	Tamil Nadu	Erode	974
182.	Tamil Nadu	Chennai	976
183.	Tamil Nadu	Virudhunagar	977
184.	Tamil Nadu	Nagapattinam	977
185.	Tamil Nadu	Theni	979
186.	Tamil Nadu	Tenkasi	989
187.	Telangana	Medak	956
188.	Telangana	Mulugu	957
189.	Telangana	Adilabad	958
190.	Telangana	Jogulamba Gadwal	969

S No.	States/UT	Districts	Sex Ratio at Birth (SRB) 2020-21 as per HMIS
191.	Telangana	Jagitial	971
192.	Telangana	Nizamabad	984
193.	Telangana	Nirmal	1008
194.	Tripura	Dhalai	958
195.	Tripura	Gomati	962
196.	Tripura	Unakoti	968
197.	Tripura	South Tripura	1000
198.	Tripura	Sepahijala	1008
199.	Uttar Pradesh	Ayodhya	953
200.	Uttar Pradesh	Moradabad	954
201.	Uttar Pradesh	Mahoba	954
202.	Uttar Pradesh	Shahjahanpur	958
203.	Uttar Pradesh	Meerut	958
204.	Uttar Pradesh	Bahraich	958
205.	Uttar Pradesh	Rampur	958
206.	Uttar Pradesh	Bulandshahr	959
207.	Uttar Pradesh	Jhansi	964
208.	Uttar Pradesh	Kanpur Nagar	967
209.	Uttar Pradesh	Jaunpur	972
210.	Uttar Pradesh	Sant Kabeer Nagar	978
211.	Uttarakhand	Dehradun	968
212.	West Bengal	Dinajpur Dakshin	953
213.	West Bengal	Hooghly	955
214.	West Bengal	Nadia	956
215.	West Bengal	24 Paraganas South	964
216.	West Bengal	Medinipur West	967
217.	West Bengal	Bankura	967
218.	West Bengal	Howrah	974









**Ministry of Women and  
Child Development**  
Government of India